

Upgrading your STAGEA mini ELB-01 to the latest version via the Internet

Preparing to download the version update data

- Make sure that you have an appropriate USB flash memory device, formatted for use on the instrument, and having enough free space for the version update data.
- Please check the Compatible USB Device List on the web site before using the USB flash memory.
- The version update data is compressed with zip format. Depending on your computer's OS, you may need a separate application to extract the files.

Downloading the version update data to your computer (Windows or Mac)

- 1 Read the License Agreement and check “Yes, I agree” to show the download button. Click the download button.**

A popup display appears.

- 2 Select [Save file] then click the [OK] button to start downloading the file.**

Save the file to the desired folder, such as the desktop on your computer.

The time necessary for downloading differs depending on your Internet connections and computer.

- 3 When the download is completed, double-click the zip file to extract the installation files to a folder.**

The folder contains the following files:

- ELBmainprg1.prg
- ELBmainprg2.prg
- ELBmainprg3.prg
- ELBmainprg4.prg
- ELMMAINBOOT.PRG
- INSTALL.PRG

In the case of a Mac OS, the files are extracted and a folder containing them is automatically created on the desktop. Select all files in the extracted folder.

- 4 Copy the update data to USB flash memory.**

Copy all files to the root folders (shown directly underneath the drive name) of the USB flash memory.

Disconnect the USB flash memory from your computer.

Before upgrading

Check that a USB memory device (other USB flash memory or USB-FDD, etc.) is not connected to the STAGEA mini.

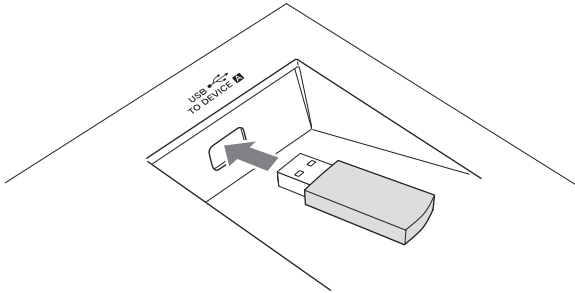
- **No USB memory device is connected.**
There is no problem. Go on to the install operation.
- **USB memory device is connected.**
Disconnect it until the installation is completed. As for a USB-FDD (floppy disk drive), as long as a floppy disk is not inserted, there is no problem.

Installing the version update data

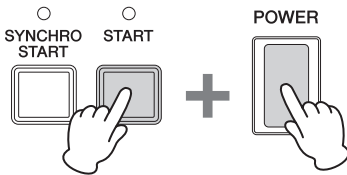
Be sure to carefully follow all the installation instructions below. Please turn off the power of the STAGEA mini if it is on.

1 Connect a USB flash memory device containing the version update data.

Check the connector of the USB flash memory device and insert it firmly into the USB TO DEVICE terminal located under the keys.



2 Simultaneously hold down the [START] button in the Rhythm section on the panel and turn on the power switch.



Keep holding down the [START] button until the following message appears in the display.

```
[START]: INSTALL  
[BREAK]: DELETE DATA
```

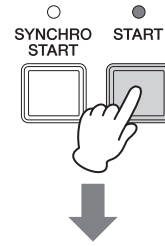
3 Press the [START] button in the Rhythm section on the panel.

Confirm the version number to be installed, as indicated by the characters "X.XX" below.

```
[START] : INSTALL  
          ver.X.XX
```

4 Press the [START] button again to start installing the version update.

Installation takes about five minutes to complete.



```
Now loading...  
■■
```

```
Now installing...  
■■■■
```

NOTICE

Make sure that you do not disconnect the USB flash memory, or turn off the power during the operation. Doing so may result in damage to the STAGEA mini.

5 The version update is complete when the completion message below appears.

```
Completed. ver.X.XX  
Turn off the power.
```

Confirm that the latest version has been installed (indicated by the characters "X.XX" above).

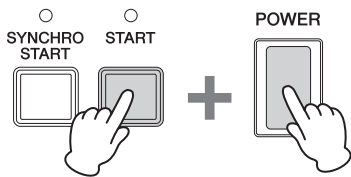
Turn off the STAGEA mini and disconnect the USB flash memory.

Supplemental instructions

Deleting the version update data

Please turn off the power of the STAGEA mini if it is on.

- 1 Connect the USB flash memory containing the version update data.
- 2 Simultaneously hold down the [START] button in the Rhythm section on the panel and turn on the power switch.

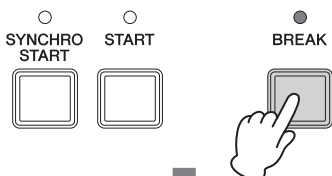


Keep holding down the [START] button until the display below appears.

```
[START]: INSTALL  
[BREAK]: DELETE DATA
```

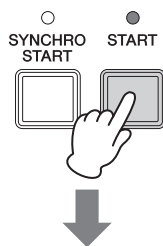
Menu display appears.

- 3 Press the [BREAK] button in the Rhythm section on the panel.



```
[START] : DELETE  
POWER OFF: CANCEL
```

- 4 The Delete operation starts when you press the [START] button in the Rhythm section.



```
Now deleting...  
■■
```

NOTICE

Make sure that you do not disconnect the USB flash memory, or turn off the power during the Delete operation. Doing so may result in damage to the USB flash memory.

- 5 The Delete operation is complete when the message below appears in the display.

```
Completed.  
Turn off the power.
```

Turn off the STAGEA mini and disconnect the USB flash memory device.