

Expanded Softsynth Plugin for MONTAGE M/MODX M installation guide

Contents

- **MODX M User and Product registration**
- Steps of installation
 1. Confirm Download Access Code
 2. Create Steinberg ID
 3. Install the Steinberg Download Assistant
 4. Enter Download Access Code
 5. Activate on the Steinberg Activation Manager
 6. Install Expanded Softsynth Plugin for MONTAGE M/MODX M

Company and product names that appear in this document are the trademarks or registered trademarks of their respective companies.


- **MODX M User and Product registration**

Scan the QR code on the card bundled in the box, or Click [here](#) to enter MODX M Welcome page.

Click “REGISTER NOW” register yourself and your MODX M.




GET THE MOST OUT OF YOUR NEW MODX M



MODX M

Premium contents for MODX M registered users

AN-Xpansion
- Tribute to Greek Legend -



SOUND LIBRARY FOR THE MODX M

This Sound Library offers you essence of the "AN-X" Virtual Analog tone generator newly installed in MODX M. This reproduced the fat, warm vintage sound reminiscent of Yamaha's vintage analog synthesizer CS-80, paying homage to Greek Legendary Film Composer.

Sign in and register your MODX M to get AN-Xpansion!


Audio Demo

0:00 / 1:09 0:00 / 1:26 0:00 / 1:39

BR End Titles CF Main Theme Theme from AMTA

***Important notice**
The download information will be sent via email. Please place a check in "Email newsletters about regional events and campaigns".
Please update your MODX M to OS V1.10 before loading this content "AN-Xpansion".

REGISTER NOW



A game-changer for musicians, the Expanded Softsynth Plugin (ESP) replicates the MODX M to your favorite Digital Workstation (DAW). Free for all registered MODX M owners, ESP allows you to create, edit and mix MODX M Performance anywhere you happen to be – without the hardware – offering an unprecedented level of stage and studio integration.

● Steps of installation

1. Confirm Download Access Code

Please confirm that you have Download Access Code on the “Expanded Softsynth Plugin for MONTAGE M/MODX M Download Information” leaflet.



MODX M6
MODX M7
MODX M8

**Expanded Softsynth Plugin
for MONTAGE M/MODX M
Download Information**

 **DO NOT THROW AWAY!**
この書類は再発行できません。捨てないでください。

EXPANDED SOFTSYNTH PLUGIN DOWNLOAD INSTRUCTIONS
To download the Expanded Softsynth Plugin, please follow this link:
<https://yamaha.jp/modxm-welcome>

 During the download, you will be asked to enter the access code at the bottom of this sheet.

EXPANDED SOFTSYNTH PLUGIN ANWEISUNGEN ZUM HERUNTERLADEN
Rufen Sie den folgenden Link auf, um das Expanded Softsynth Plugin herunterzuladen:
<https://yamaha.jp/modxm-welcome>

 Während des Herunterladens werden Sie aufgefordert, den Zugriffscode unten im Blatt einzugeben.

INSTRUCTIONS POUR LE TÉLÉCHARGEMENT DU LOGICIEL EXPANDED SOFTSYNTH PLUGIN
Pour télécharger le logiciel Expanded Softsynth Plugin, veuillez suivre le lien suivant:
<https://yamaha.jp/modxm-welcome>

 Pendant le téléchargement, vous serez invité à saisir le code d'accès qui figure en bas de cette feuille.

EXPANDED SOFTSYNTH PLUGIN INSTRUCCIONES DE DESCARGA
Para descargar el Expanded Softsynth Plugin, utilice este enlace:
<https://yamaha.jp/modxm-welcome>

 Durante la descarga, se le pedirá que indique el código de acceso que encontrará al final de esta página.

EXPANDED SOFTSYNTH PLUGIN INSTRUÇÕES PARA DOWNLOAD
Para baixar o Expanded Softsynth Plugin, use este link:
<https://yamaha.jp/modxm-welcome>

 Durante o download, você receberá uma solicitação para inserir o código de acesso localizado na parte inferior desta folha.

ISTRUZIONI PER IL DOWNLOAD DI EXPANDED SOFTSYNTH PLUGIN
Per scaricare Expanded Softsynth Plugin, seguire questo collegamento:
<https://yamaha.jp/modxm-welcome>

 Durante il download, verrà chiesto di inserire il codice di accesso disponibile in fondo a questo foglio.

EXPANDED SOFTSYNTH PLUGIN DOWNLOADINSTRUCTIES
Voor het downloaden van de Expanded Softsynth Plugin gebruikt u deze link:
<https://yamaha.jp/modxm-welcome>

 Tijdens het downloaden wordt u gevraagd om de toegangscode in te voeren die u onderaan op dit blad vindt.

EXPANDED SOFTSYNTH PLUGIN ИНСТРУКЦИЯ ПО ЗАГРУЗКЕ
Загрузите Expanded Softsynth Plugin по следующей ссылке:
<https://yamaha.jp/modxm-welcome>

 Во время загрузки вас попросят ввести код доступа, указанный внизу этой страницы.

EXPANDED SOFTSYNTH PLUGIN 下载说明
请下载 Expanded Softsynth Plugin，请点击以下链接：
<https://yamaha.jp/modxm-welcome>

 在下载过程中，您将需要输入本页面底部显示的访问代码。

EXPANDED SOFTSYNTH PLUGIN 下载指示
请下载 Expanded Softsynth Plugin，请点击以下链接：
<https://yamaha.jp/modxm-welcome>

 请注意：下载期间，您将指示输入本页面底部显示的访问代码。

EXPANDED SOFTSYNTH PLUGIN 다운로드 지침
Expanded Softsynth Plugin을 다운로드하려면 다음 링크로 이동하십시오.
<https://yamaha.jp/modxm-welcome>

 다운로드 중 본 시트의 하단의 액세스 코드를 입력하는 메시지가 나타납니다.

EXPANDED SOFTSYNTH PLUGIN ダウンロード方法
以下のURLにアクセスしてください。
<https://yamaha.jp/modxm-welcome>

 ダウンロード時に本シートの下部に提示されたアクセスコードを入力するように求められます。

Download Access Code

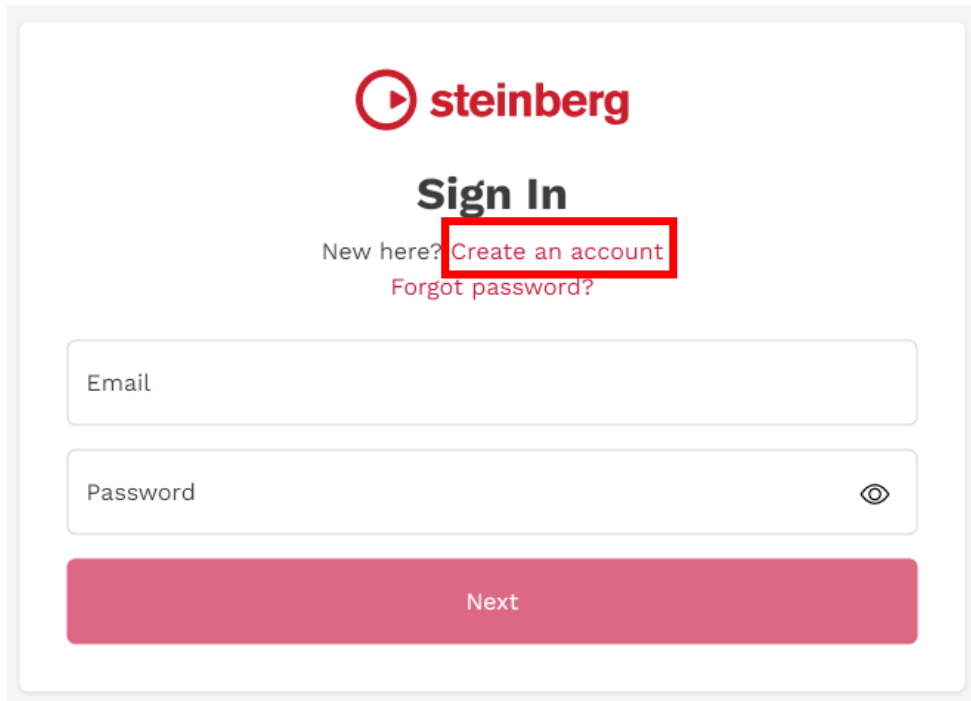
~~TTAAAM00LE39CC-745UD35EE~~
SAMPLE NOT VALID

 VHC5480

* The Download Access Code cannot be reissued. Please be careful not to lose yours.

2. Create Steinberg ID

If you don't have Steinberg ID, click [here](#) and create Steinberg ID.



The image shows a 'Sign In' form for Steinberg. At the top is the Steinberg logo, which consists of a red circle with a white play button icon inside, followed by the word 'steinberg' in a bold, black, sans-serif font. Below the logo is the text 'Sign In' in a bold, black, sans-serif font. Underneath 'Sign In' are two links: 'New here? Create an account' and 'Forgot password?'. The 'Create an account' link is highlighted with a red rectangular box. Below these links are two input fields: 'Email' and 'Password'. The 'Email' field is a simple white box with a light gray border. The 'Password' field is a white box with a light gray border and a small eye icon on the right side. At the bottom of the form is a large, solid pink button with the word 'Next' in white, centered text.

If you already have Steinberg ID, please skip this step.

3. Install the Steinberg Download Assistant

Download and install the latest [Steinberg Download Assistant](#).

Open the Steinberg Download Assistant and sign in with your Steinberg ID.

Once you're signed in to the Steinberg Download Assistant, it will automatically handle the installation of other necessary tools, such as the [Steinberg Activation Manager](#).

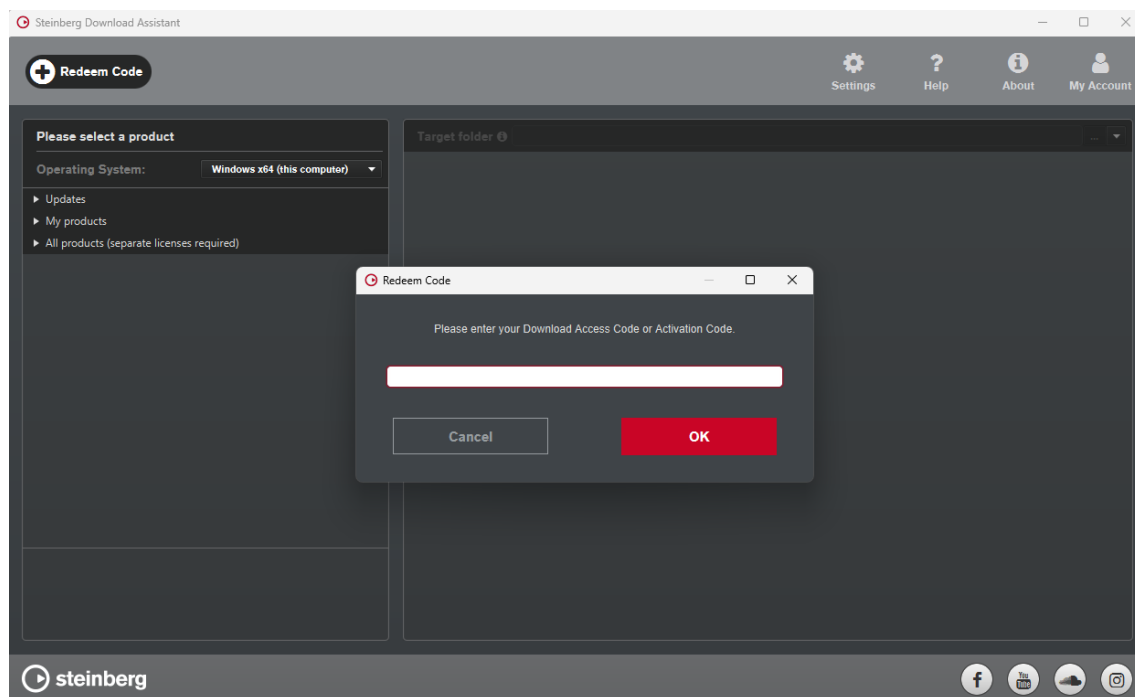
- Wait until the Steinberg Download Assistant has completed the installations.

4. Enter Download Access Code

Open Steinberg Download Assistant.

Click “Enter your Download Access Code”.

Enter your Download Access Code to the dialog box and click “OK”.



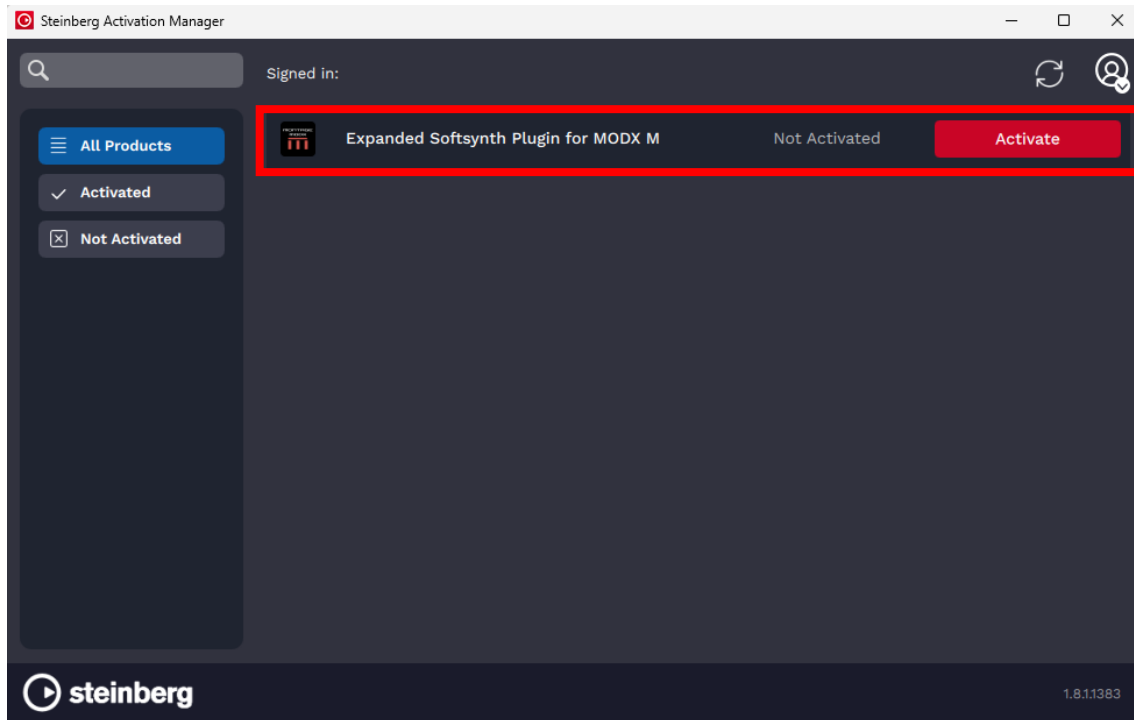
You will find “Expanded Softsynth Plugin for MONTAGE M/MODX M” on “My product downloads”.

5. Activate on the Steinberg Activation Manager

Open Steinberg Activation manager.

You'll find Expanded Softsynth Plugin for MODX M.

Click "Activate" button.

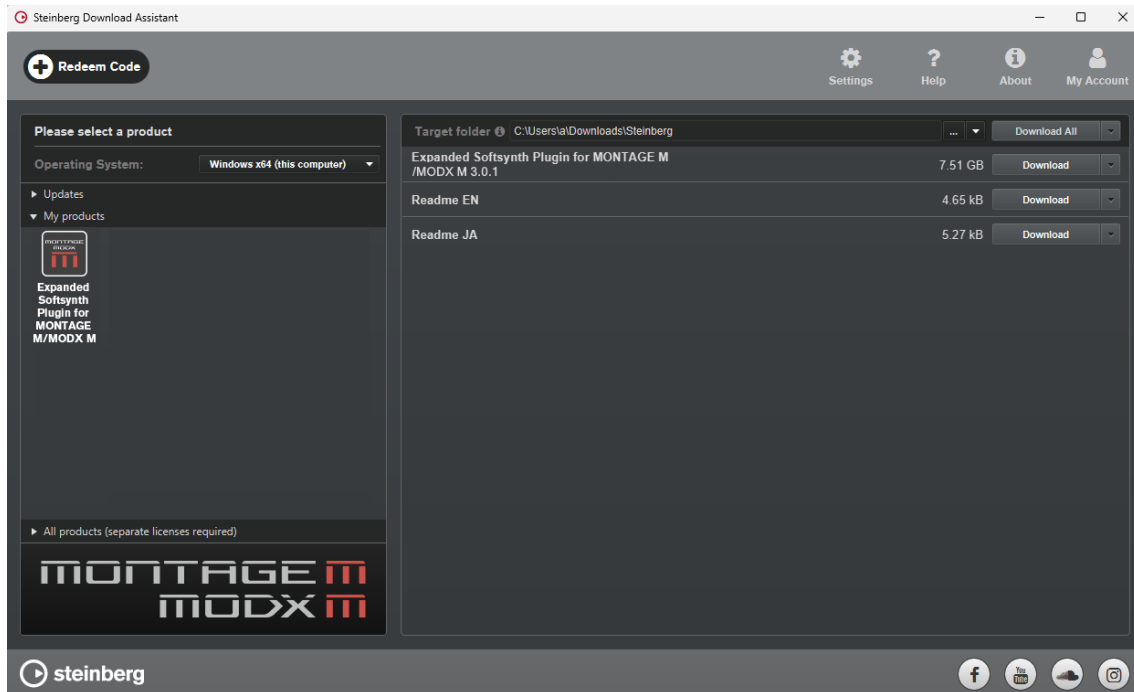


When the button shows "Deactivate" in gray, the activation process is finished.

* Please note Activation process may need few seconds. Please do NOT click repeatedly.

6. Install Expanded Softsynth Plugin for MONTAGE M/MODX M

Download Expanded Softsynth Plugin related files from Steinberg Download Assistant.



Then extract and open Expanded Softsynth Plugin installer.

Windows : Install Expanded Softsynth Plugin for MONTAGE M-MODX M.exe

Mac : Install Expanded Softsynth Plugin for MONTAGE M-MODX M Vx.x.x.pkg

Please follow the installer to complete installation.