



Studio Manager

for DM 2000 / DM 1000 /
O2R96 / O1V96

Installation Guide

Important Information

Special Notices

- The software and this owner's manual are the exclusive copyrights of Yamaha Corporation.
- Use of the software and this manual is governed by the Software Licensing Agreement which the purchaser fully agrees to upon breaking the seal of the software packaging. (Carefully read the agreement at the end of this manual before installing the software.)
- Copying of the software or reproduction of this manual in whole or in part by any means is expressly forbidden without the written consent of the manufacturer.
- Yamaha makes no representations or warranties with regard to the use of the software and documentation and cannot be held responsible for the results of the use of this manual and the software.
- This disc is a CD-ROM. Do not attempt to play the disc on an audio CD player. Doing so may result in irreparable damage to your audio CD player.
- Copying of the commercially available music sequence data and/or digital audio files is strictly prohibited except for your personal use.
- The screen displays as illustrated in this owner's manual are for instructional purposes, and may appear somewhat different from the screens which appear on your computer.
- Future upgrades of application and system software and any changes in specifications and functions will be announced separately.

Trademarks

Adobe, Acrobat, and Reader are registered trademarks of Adobe Systems Incorporated. Apple, AppleTalk, and Macintosh are registered trademarks of Apple Computer, Inc. Microsoft and Windows are registered trademarks of Microsoft Corporation. OMS is a registered trademark of Opcode Systems, Inc. Pentium and Celeron are registered trademarks of Intel Corporation. PowerPC is a registered trademark of International Business Machines Corporation. SmartMedia is a trademark of Toshiba America, Inc. All other trademarks are the property of their respective holders and are hereby acknowledged.

Copyright

No part of the Studio Manager software or its documentation may be reproduced or distributed in any form or by any means without the prior written authorization of Yamaha Corporation.

© 2003 Yamaha Corporation. All rights reserved.

Yamaha Web Site

Information about Studio Manager, related products, and other Yamaha professional audio equipment is available on the Yamaha Professional Audio Web site at:
<http://www.yamahaproaudio.com/>

- * Specifications and descriptions in this owner's manual are for information purposes only. Yamaha Corp. reserves the right to change or modify products or specifications at any time without prior notice. Since specifications, equipment or options may not be the same in every locale, please check with your Yamaha dealer.

Contents

1	Getting Started	4
	Introduction	4
	CD-ROM Contents	4
	Windows System Requirements	5
	Macintosh System Requirements	6
	System Hookup	7
	Configuring Your Yamaha Mixing Console	7
2	Windows Installation	8
	Acrobat Reader	8
	USB MIDI Driver	8
	Yamaha CBX Driver (DM2000/02R96 only)	15
	Studio Manager	15
	Card Filer (DM2000 only)	15
3	Macintosh Installation	16
	Acrobat Reader	16
	OMS (Open Music System)	16
	USB MIDI Driver	17
	Studio Manager	18
	Card Filer (DM2000 only)	18
	Setting Up OMS	19
4	Getting Started	20
	Starting Studio Manager	20
	Quitting Studio Manager	20
	Specifying the MIDI Port (DM1000/01V96 & Windows only)	20
	Configuring Studio Manager	21
	Synchronizing Studio Manager	22
	Working with Sessions	23
5	Troubleshooting	24

1 Getting Started

Introduction

With Yamaha Studio Manager you can control your Yamaha digital mixing console from your Windows or Macintosh computer. There are four versions of Studio Manager:

- Studio Manager for DM2000
- Studio Manager for 02R96
- Studio Manager for DM1000
- Studio Manager for 01V96

The CD-ROM supplied with the DM2000 or 02R96 contains *Studio Manager for DM2000* and *Studio Manager for 02R96*. The CD-ROM supplied with the DM1000 or 01V96 contains *Studio Manager for DM1000* and *Studio Manager for 01V96*.

This *Installation Guide* explains how to install Studio Manager and the necessary driver software for Windows and Macintosh computers. The owner's manual for Studio Manager can be found on the included CD-ROM (Acrobat PDF format).

CD-ROM Contents

DM2000/02R96 CD-ROM

	Folder	Software	Description
Windows	Acroread\English	Acrobat Reader ^{1, 2}	Adobe Acrobat Reader software for viewing the PDF manuals.
	SM_\DM2000	Studio Manager for DM2000 ¹	Yamaha Studio Manager for DM2000
	SM_\02R96	Studio Manager for 02R96 ¹	Yamaha Studio Manager for 02R96
	Mididrv_	Yamaha CBX Driver	Yamaha serial driver. Necessary if you are connecting to a serial port on your PC.
	USBdrv_	Yamaha USB MIDI Driver (Windows 98, Me)	Yamaha USB driver. Necessary if you are connecting to a USB port on your PC.
	USBdrv2k_	Yamaha USB MIDI Driver (Windows 2000, XP)	
	Card_	Card Filer ¹	Yamaha utility for transferring and managing data stored on the DM2000's SmartMedia card.
Macintosh	Acroread\English	Acrobat Reader ^{1, 2}	Adobe Acrobat Reader software for viewing the PDF manuals.
	SM_\DM2000	Studio Manager for DM2000 ¹	Yamaha Studio Manager for DM2000
	SM_\02R96	Studio Manager for 02R96 ¹	Yamaha Studio Manager for 02R96
	OMS_	Open Music System (OMS) 2.3.8 ^{1, 2}	Opcode driver software for use with MIDI applications on Macintosh computers.
		OMS Setup for YAMAHA	OMS studio setup files for use with the DM2000 and 02R96.
	USBdrv_	YAMAHA USB MIDI Driver	Yamaha USB driver. Necessary if you are connecting to a USB port on your Macintosh computer.
	Card_	Card Filer ¹	Yamaha utility for transferring and managing data stored on the DM2000's SmartMedia card.

1. For information on using this software, refer to the PDF manual after installation.

2. This software is not supported by Yamaha.

DM1000/01V96 CD-ROM

	Folder	Software	Description
Windows	Acroread\English	Acrobat Reader ^{1, 2}	Adobe Acrobat Reader software for viewing the PDF manuals.
	SM_\DM1000	Studio Manager for DM1000 ¹	Yamaha Studio Manager for DM1000
	SM_\01V96	Studio Manager for 01V96 ¹	Yamaha Studio Manager for 01V96
	USBdrv_	Yamaha USB MIDI Driver (Windows 98, Me)	Yamaha USB driver. Necessary if you are connecting to a USB port on your PC.
	USBdrv2k_	Yamaha USB MIDI Driver (Windows 2000, XP)	
Macintosh	Acroread\English	Acrobat Reader ^{1, 2}	Adobe Acrobat Reader software for viewing the PDF manuals.
	SM_\DM1000	Studio Manager for DM1000 ¹	Yamaha Studio Manager for DM1000
	SM_\01V96	Studio Manager for 01V96 ¹	Yamaha Studio Manager for 01V96
	OMS_	Open Music System (OMS) 2.3.8 ^{1, 2}	Opcode driver software for use with MIDI applications on Macintosh computers.
		OMS Setup for YAMAHA	OMS studio setup files for use with the DM1000 and 01V96.
	USBdrv_	YAMAHA USB MIDI Driver	Yamaha USB driver. Necessary if you are connecting to a USB port on your Macintosh computer.

1. For information on using this software, refer to the PDF manual after installation.

2. This software is not supported by Yamaha.

Windows System Requirements

The system requirements of your operating system may be different to those listed here.

Studio Manager

Computer	A PC with a 433 MHz or faster Intel Pentium or Celeron family processor
OS	Windows 98SE, Me, 2000, XP Home Edition, XP Professional
Memory	128 MB or more
Hard Disk	20 MB or more of free space
Display	1024 x 768 pixels, 256 colors or higher 1280 x 1024, High Color 16-bit recommended (If you use display settings of 1024 x 768, turn on the Task Bar's Auto-hide option.)

Card Filer (DM2000 only)

Computer	A PC with a 100 MHz or faster Intel Pentium or Celeron family processor
OS	Windows 95, 98, 98SE, Me, NT4.0, 2000, XP Home Edition, XP Professional
Memory	8 MB or more
Hard Disk	2 MB or more of free space
Display	800 x 600 pixels, 256 colors or higher

Yamaha USB MIDI Driver

Computer	A PC with a 166 MHz or faster Intel Pentium or Celeron family processor and a USB port
OS	Windows 98, 98SE, Me, 2000, XP Home Edition, XP Professional
Memory	32 MB or more
Hard Disk	2 MB or more of free space

Yamaha CBX Driver (DM2000/02R96 only)

OS	Windows 95, 98, 98SE, Me, NT4.0, 2000, XP Home Edition, XP Professional
----	---

System requirements for software not listed here can be found on the CD-ROM.

Macintosh System Requirements

The system requirements of your operating system may be different to those listed here.

Studio Manager

Computer	A Macintosh G3/233 MHz or better and a USB port
OS	Mac OS 8.6 to 9.2.2 (Mac OS X not supported)
Memory	120 MB or more of free memory (Virtual memory must be turned off)
Hard Disk	7 MB or more
Display	1024 x 768 pixels, 256 colors or higher 1280 x 1024, 32,000 colors recommended
Other	OMS 2.3.3 or later

Note: If you are using a PowerBook on battery power, open the Energy Save control panel, and in Advanced Settings, Additional Power Savings, turn off Allow processor cycling.

Card Filer (DM2000 only)

Computer	A Macintosh computer with a PowerPC processor or better
OS	Mac OS 7.5 to 9.2.2 (Mac OS X not supported)
Memory	8 MB or more of free memory
Hard Disk	6 MB or more
Display	800 x 600 pixels, 256 colors or higher

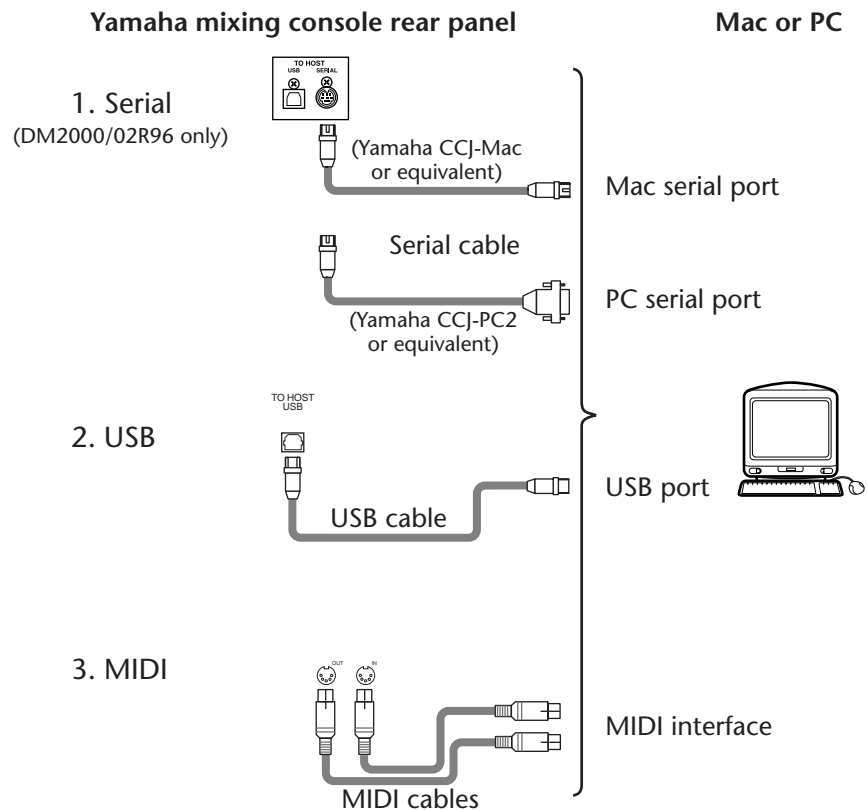
Yamaha USB MIDI Driver

Computer	A Macintosh computer with a PowerPC processor or better and a USB port
OS	Mac OS 8.6 to 9.2.2 (Mac OS X not supported)
Memory	64 MB or more (recommended: 128 MB or more)
Hard Disk	2 MB or more

System requirements for software not listed here can be found on the CD-ROM.

System Hookup

The following illustration shows the available hookup methods you can use to connect your Yamaha mixing console to your computer: serial, USB, MIDI.



Note: Before you connect to serial or MIDI ports, turn off your Yamaha mixing console and computer.

Configuring Your Yamaha Mixing Console

On your Yamaha mixing console, use the DISPLAY ACCESS [SETUP] button ([DIO/SETUP button on the 01V96) to locate the MIDI/TO HOST Setup page. Under “Studio Manager,” select a port and assign an ID to your Yamaha mixing console. If you are using a serial connection, set the TO HOST SERIAL options as appropriate (i.e., “PC-2” for a Windows PC, or “Mac” for a Macintosh computer).

Warning: Do not set the TO HOST SERIAL option to “Mac” while your Yamaha mixing console is connected to your PC’s serial port. Doing so may damage your PC.

2 Windows Installation

Acrobat Reader

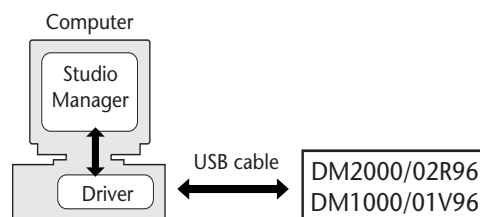
To view the PDF manuals included on the CD-ROM, you need to install the Adobe Acrobat Reader software. If you already have this software installed, skip this section.

- 1 **Start your computer and Windows, and then insert the included CD-ROM into your computer's CD-ROM drive.**
- 2 **Double-click the "Acroread_" folder on the CD-ROM.**
This folder contains Acrobat software in several languages.
- 3 **Double-click the folder of the language you want to install.**
- 4 **Double-click "ar***enu.exe."** ("***" indicates the software version.)
- 5 **Follow the on-screen instructions to install the software.**

For instructions on using Acrobat Reader, choose Reader Help from Acrobat Reader's Help menu.

USB MIDI Driver

If you are connecting your Yamaha mixing console to a USB port on your computer, you'll need to install the Yamaha USB driver. If you already have this driver installed, skip this section.



The procedure you use for installing the Yamaha USB driver depends on which version of Windows you're using:

- Windows 98 & 98SE—page 9
- Windows Me—page 12
- Windows 2000—page 13
- Windows XP—page 14

Windows 98 & 98SE

- 1 Start your computer and Windows, and then insert the included CD-ROM into your computer's CD-ROM drive.
- 2 Turn off your Yamaha mixing console, and then use a USB cable to connect its USB TO HOST port to a USB port on your computer.
- 3 Turn on your Yamaha mixing console.

The Add New Hardware Wizard appears. If it doesn't appear, try disconnecting and reconnecting the USB cable. Alternatively, open the Add New Hardware control panel.



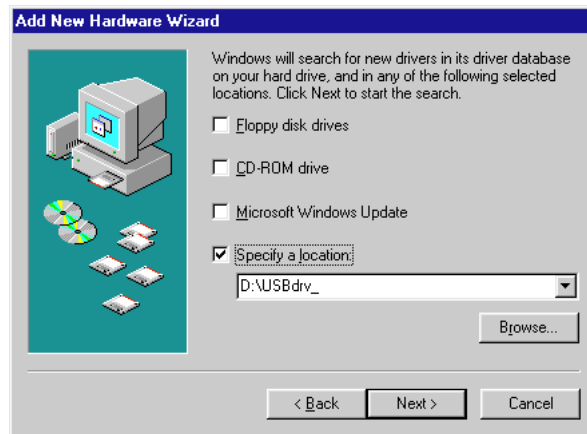
- 4 Click Next.

The following window appears.



- 5 Select "Search for the best driver for your device (Recommended)," and then click Next.

The following window appears.



- 6 Select “Specify a location,” and specify “D:\USBdrv_” (replacing “D” with the drive letter of your CD-ROM drive), and then click Next.

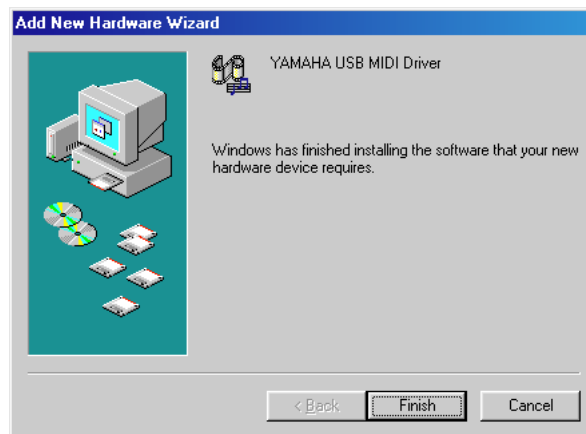
When the driver is located, “YAMAHA USB MIDI Driver” is displayed, as shown below.



- 7 Click Next.

Note: You may be prompted to insert your Windows CD-ROM. Do not insert it! Click OK, and in the “Copy files from” section of the subsequent dialog box, enter “D:\USBdrv_” (replacing “D” with the drive letter of your CD-ROM drive), and then click OK.

The driver is installed, and the following window appears when the installation is complete.



- 8 Click Finish, and then restart your computer.**

Windows Me

- 1 **Start your computer and Windows, and then insert the included CD-ROM into your computer's CD-ROM drive.**
- 2 **Turn off your Yamaha mixing console, and then use a USB cable to connect its USB TO HOST port to a USB port on your computer.**
- 3 **Turn on your Yamaha mixing console.**

The Add New Hardware Wizard appears. If it doesn't appear, try disconnecting and reconnecting the USB cable. Alternatively, open the Add New Hardware control panel.



- 4 **Select "Automatic search for a better driver (Recommended)," and then click Next.**

Windows Me should be able to locate the driver automatically, in which case you can proceed to Step 5. If the driver cannot be located, select "Specify the location of the driver (Advanced)," click Next, specify your CD-ROM drive (e.g., D:\USBdrv_), and then continue as prompted.

The following window appears when the installation is complete.



- 5 **Click Finish, and then restart your computer.**

Windows 2000

- 1 Start your computer and Windows, log on as the Administrator, and then insert the included CD-ROM into your computer's CD-ROM drive.
- 2 Go to My Computer→Control Panel→System→Hardware→Driver Signing→File Signature Verification, select "Ignore—Install all files, regardless of file signature," and then click OK.
- 3 Turn off your Yamaha mixing console, and then use a USB cable to connect its USB TO HOST port to a USB port on your computer.
- 4 Turn on your Yamaha mixing console.
The Found New Hardware Wizard appears.
- 5 Click Next.
- 6 Select "Search for a suitable driver for my device (Recommended)," and then click Next.
- 7 In the subsequent window, select "CD-ROM drives" only, and then click Next.

Note: You may be prompted to insert your Windows CD-ROM. Do not insert it! Click OK, and in the "Copy files from" section of the subsequent dialog box, enter "D:\USBdrv2k_" (replacing "D" with the drive letter of your CD-ROM drive), and then click OK.

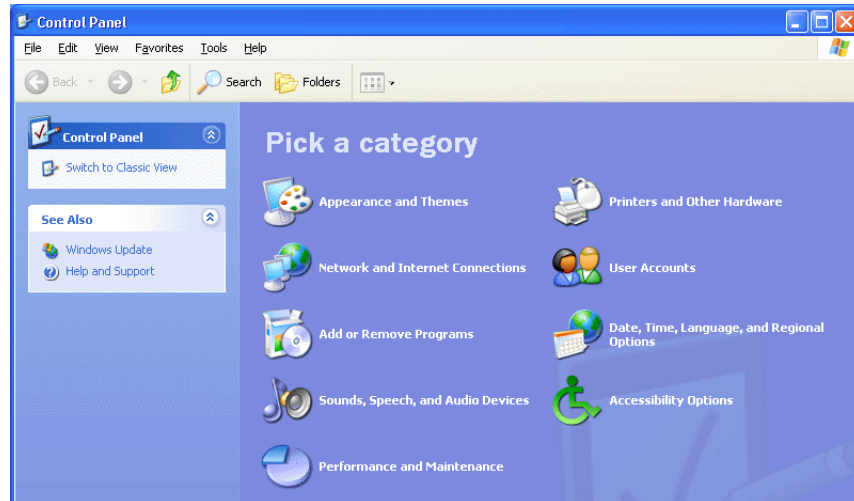
The driver is installed, and the message "Completing the Found New Hardware Wizard" appears.

- 8 Click Finish, and then restart your computer.

Windows XP

- 1 **Start your computer and Windows, and then insert the included CD-ROM into your computer's CD-ROM drive.**
- 2 **Click the Start button, and then click Control Panel.**

If the Control Panel window appears as shown below, click “Switch to Classic View” on the left side of the window in order to see all of the control panels.



- 3 **Go to System Hardware→Driver signatures→Driver signature options, select “Ignore—Install software without asking for confirmation,” and then click OK.**
- 4 **Click OK to close the System Properties window, and then click the Close button to close the Control Panel window.**
- 5 **Turn off your Yamaha mixing console, and then use a USB cable to connect its USB TO HOST port to a USB port on your computer.**
- 6 **Turn on your Yamaha mixing console.**
The Found New Hardware Wizard appears.
- 7 **Select “Install software automatically (recommended) (I),” and then click Next.**
The driver is installed, and the message “Completing the Found New Hardware Wizard” appears.
- 8 **Click Finish, and then restart your computer.**

Yamaha CBX Driver (DM2000/02R96 only)

If you're connecting your Yamaha mixing console to a serial port on your computer, you'll need to install the Yamaha CBX driver. If you already have this driver installed, skip this section.

- 1 Double-click the "Mididrv_" folder on the CD-ROM.
- 2 Double-click "Setup.exe."
- 3 Follow the on-screen instructions to install the software.

Studio Manager

- 1 Double-click the "SM_" folder on the CD-ROM.
- 2 Double-click the "DM2000," "02R96," "DM1000," or "01V96" folder as appropriate.
- 3 Double-click "Setup.exe."
- 4 Follow the on-screen instructions to install the software.

Card Filer (DM2000 only)

- 1 Double-click the "Card_" folder on the CD-ROM.
- 2 Double-click "Setup.exe."
- 3 Follow the on-screen instructions to install the software.

For information on using Card Filer, see the "CardFilerManual.pdf." This file is installed in the same folder as Card Filer.

3 Macintosh Installation

Acrobat Reader

To view the PDF manuals included on the CD-ROM, you need to install the Adobe Acrobat Reader software. If you already have this software installed, skip this section.

- 1 **Start your Macintosh, and then insert the included CD-ROM into your computer's CD-ROM drive.**
- 2 **Double-click the "Acroread_" folder on the CD-ROM.**
This folder contains Acrobat software in several languages.
- 3 **Double-click the folder of the language you want to install.**
- 4 **Double-click "Reader Installer."**
(The actual name of the installer depends on the language you select.)
- 5 **Follow the on-screen instructions to install the software.**

For instructions on using Acrobat Reader, choose Reader Guide from Acrobat Reader's Help menu.

OMS (Open Music System)

Studio Manager requires OMS 2.3.3 or later in order to work on Macintosh computers. OMS 2.3.8 is included on the CD-ROM. If you already have OMS 2.3.3 or later installed, skip this section.

- 1 **Start your Macintosh, and then insert the included CD-ROM into your computer's CD-ROM drive.**
- 2 **Double-click the "OMS_" folder on the CD-ROM.**
- 3 **Double-click "Install OMS 2.3.8."**
- 4 **Follow the on-screen instructions to install the software.**
- 5 **When the installation is complete, click Restart.**

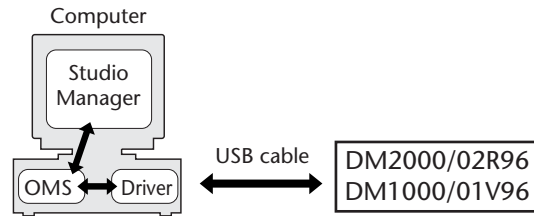
Note: Once the installation is complete, you may receive an error message warning that the installer did not quit. In this case, choose Quit from the File menu to quit the installer, then restart your computer.

- 6 **Copy the "OMS_2.3_Mac.pdf" from the "OMS_" folder on the CD-ROM to the "Opcode:OMS Applications" folder on your hard disk.**

This file contains information on using and configuring OMS.

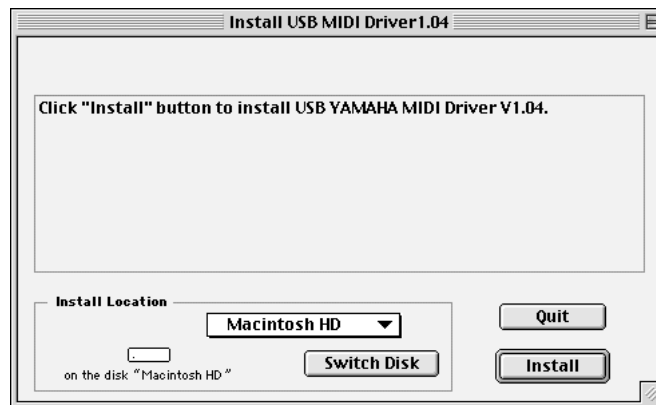
USB MIDI Driver

If you're connecting your Yamaha mixing console to a USB port on your computer, you'll need to install the Yamaha USB driver. If you already have this driver installed, skip this section.



- 1 **Start your Macintosh, and then insert the included CD-ROM into your computer's CD-ROM drive.**
- 2 **Double-click the "USBdrv_" folder on the CD-ROM.**
- 3 **Double-click "Install USB MIDI Driver."**

The Install USB MIDI Driver window appears, as shown below.



Normally there's no need to set the Install Location, because the startup disk is selected by default. To select another disk, click the Switch Disk button.

Although you can select a destination folder from the pop-up menu, the files are installed in the specified disk's System Folder regardless, so you can ignore that option.

- 4 **Click Install, and follow the on-screen instructions to install the software.**
- 5 **When the installation is complete, click Restart.**

Studio Manager

- 1 Start your Macintosh, and then insert the included CD-ROM into your computer's CD-ROM drive.
- 2 Double-click the "SM_" folder on the CD-ROM.
- 3 Double-click the "DM2000," "02R96," "DM1000," or "01V96" folder as appropriate.
- 4 Double-click "Install Studio Manager."
- 5 Follow the on-screen instructions to install the software.

Card Filer (DM2000 only)

- 1 Start your Macintosh, and then insert the included CD-ROM into your computer's CD-ROM drive.
- 2 Double-click the "Card_" folder on the CD-ROM.
- 3 Double-click "Install Card Filer."
- 4 Follow the on-screen instructions to install the software.

For information on using Card Filer, see the "CardFilerManual.pdf." This file is installed in the same folder as Card Filer.

Setting Up OMS

The “OMS Setup for YAMAHA” folder on the included CD-ROM contains OMS studio setup files preconfigured for use with your Yamaha mixing console.

- 1 Turn off your Yamaha mixing console, and then use a USB cable to connect its USB TO HOST port to a USB port on your computer.**

If you are connecting to the SERIAL TO HOST port, use a serial cable to connect to the Printer or Modem port on your computer.

- 2 Turn on your Yamaha mixing console.**
- 3 Start your Macintosh, and then insert the included CD-ROM into your computer’s CD-ROM drive.**
- 4 Open the “OMS_” folder on the CD-ROM, and then open the “OMS Setup for YAMAHA” folder.**

The “DM2000/02R96” folder contains the following OMS studio setup files:

- DM2000-USB
- DM2000-Modem
- DM2000-Printer
- 02R96-USB
- 02R96-Modem
- 02R96-Printer

The “DM1000/01V96” folder contains the following OMS studio setup files:

- DM1000-USB
- 01V96-USB

- 5 Copy the appropriate file to your computer’s hard disk, and then double-click it.**

Note: If the AppleTalk dialog box appears, click the Turn It Off button, and then click OK on the subsequent dialog box.

OMS Setup starts and the Studio Setup file window appears.

- 6 Choose Make Current from the File menu, and then save the setup.**

Note: If you are using Studio Manager for DM2000/02R96 and the Modem or Printer port, go to OMS Setup Preferences and turn off “Use Apple SerialDMA driver when available.”

After completing the above setup, your Yamaha mixing console will be the only MIDI device in the current OMS studio setup. In order to use other MIDI devices, or to add an additional Yamaha mixing console, you must create a new studio setup. See the “OMS_2.3_Mac.pdf” for more information.

4 Getting Started

Starting Studio Manager

The following procedure uses “DM1000” as an example. The content of the menu items selected in the procedure below may vary depending on the version number of Studio Manager software.

Windows: Click the Start button and then click Programs→(YAMAHA OPT Tools→)YAMAHA Studio Manager for DM1000→Studio Manager for DM1000.

Macintosh: Open the Studio Manager for DM1000 folder and double-click “SM_DM1K.”

If your Yamaha mixing console is detected while Studio Manager starts up, the Synchronization dialog box appears, from which you can choose to transfer the settings of your Yamaha mixing console to Studio Manager or vice versa. See “Synchronizing Studio Manager” on page 22 for more information. If no Yamaha mixing console is detected, a new Console window opens.



The ONLINE indicator is displayed while Studio Manager is connected to your Yamaha mixing console. When no Yamaha mixing console is detected, the OFFLINE indicator is displayed.

Quitting Studio Manager

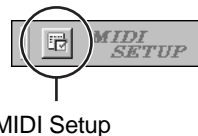
Choose Exit (Quit on the Macintosh) from the File menu.

If there are no unsaved changes, all windows close and Studio Manager quits. If there are unsaved changes, a message asking whether or not you want to save the changes appears. Click Yes to save the changes and quit, click No to quit, or click Cancel to cancel the operation. Studio Manager can also be quit by clicking the Console window’s Close button.

Specifying the MIDI Port (DM1000/01V96 & Windows only)

Before selecting a MIDI port in Studio Manager (page 21), you must specify which MIDI port is connected to your DM1000.

- 1 **Start Studio Manager.**
- 2 **Click the MIDI Setup button on the MIDI SETUP toolbar, as shown below.**



The MIDI Setup dialog box appears.

- 3 **Select the MIDI port to which your DM1000 is connected (e.g., MIDI In, Out, or Thru).**

Note: To use a MIDI port with Studio Manager, you must select it on the MIDI Setup dialog box (as explained above) and on the System Setup dialog box, as explained on page 21.

Warning: Studio Manager does not yet support OPT (Open Plug-in Technology), so even if it appears in the menu of an OPT compatible program, do not start it in this way.

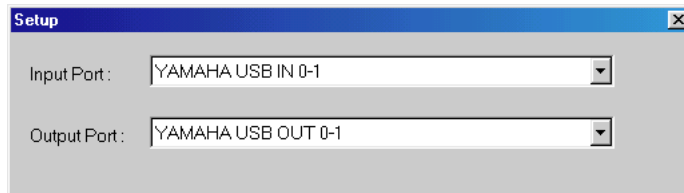
Configuring Studio Manager

Note: If you're using Windows, you must specify a MIDI port (see page 20) before making the following settings.

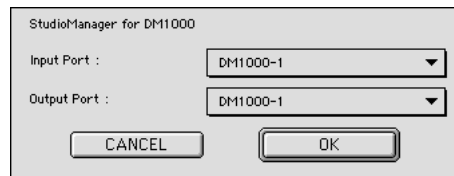
Selecting Ports

In order to use Studio Manager, you must specify the input and output ports that Studio Manager should use to communicate with your Yamaha mixing console.

Windows: Choose System Setup from the File menu, and specify the input and output ports on the Setup dialog box, as shown below.



Macintosh: Choose Select OMS Ports from the File menu, and specify the input and output ports (device names set in OMS Studio Setup) on the Setup dialog box, as shown below.



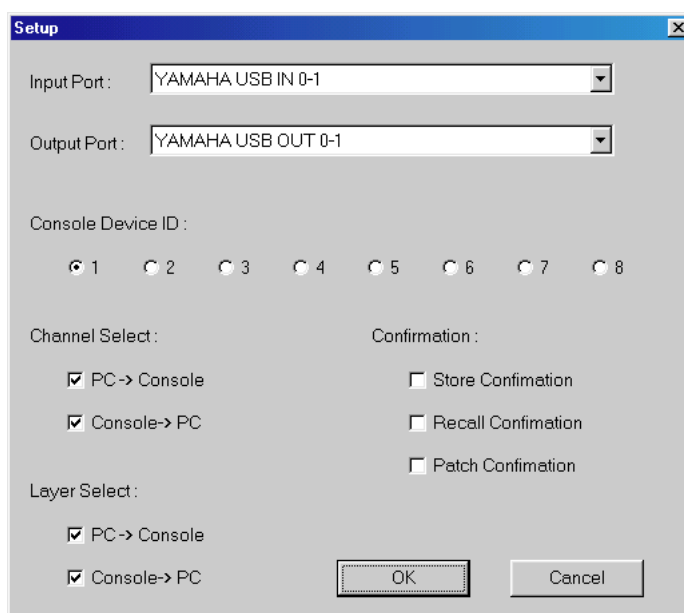
Note: Choose OMS MIDI Setup from the File menu, and make sure that the “Run MIDI in Background” option is on.

OMS Studio Setup can be opened directly from Studio Manager by selecting OMS Studio Setup from the File menu.

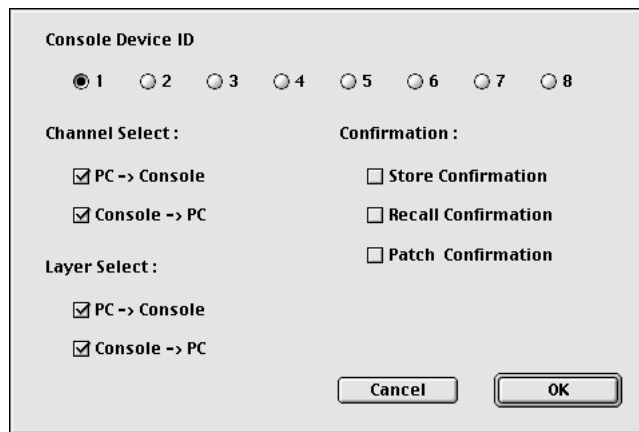
System Setup

To open the Setup window, choose System Setup from the File menu.

This is the Windows Setup window.



This is the Macintosh Setup window



Input Port/Output Port: (Windows only) These pop-up menus are used to select the ports with which Studio Manager communicates with your Yamaha mixing console.

Console Device ID: Studio Manager can control any one of up to eight Yamaha mixing consoles, each with its own exclusive ID. Select the ID of Yamaha mixing console that you want to control.

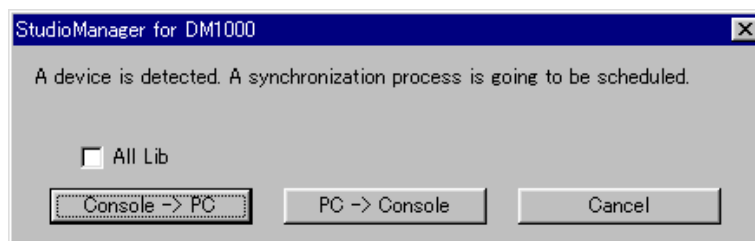
Channel Select: These options determine whether or not channel selection is linked. When the PC->Console option is on, selecting a channel on Studio Manager selects the same channel on your Yamaha mixing console. When the Console->PC option is on, selecting a channel on your Yamaha mixing console selects the same channel on Studio Manager.

Confirmation: These options determine whether or not a confirmation dialog box appears when storing, recalling, or patching.

Layer Select: These options determine whether or not Layer selection is linked. When the PC->Console option is on, selecting a Layer on Studio Manager selects the same Layer on your Yamaha mixing console. When the Console->PC option is on, selecting a Layer on your Yamaha mixing console selects the same Layer on Studio Manager.

Synchronizing Studio Manager

If your Yamaha mixing console is detected while Studio Manager starts up, or while Studio Manager is up and running, the Synchronization dialog box shown below appears.



All Lib: This option determines whether or not Scene and Library data is synchronized.

Console->PC: Click this button to transfer the settings of your Yamaha mixing console to the current Studio Manager Session.

PC->Console: Click this button to transfer the settings of current Studio Manager Session to your Yamaha mixing console.

Cancel: Click this button to leave your Yamaha mixing console and current Studio Manager Session unsynchronized.

Note: Do not operate your Yamaha mixing console while synchronization is in progress.

You can resynchronize the system at any time by choosing Re-synchronize from the Synchronization menu.

Working with Sessions

A Studio Manager Session consists of all your Yamaha mixing console's mix settings, including Scene and library data.

- To create a new Session, choose New Session from the File menu.
- To open a previously saved Session, choose Open Session from the File menu.
- To save the current Session, choose Save Session from the File menu.
- To save the current Session with a new name, choose Save Session as from the File menu.

Note: In order to save the current Automix, or the settings of an optional Y56K card, in a Session, you must resynchronize Studio Manager beforehand (Console->PC).

Note: In order to protect the communication port used by Studio Manager, your Yamaha mixing console communication settings (e.g., MIDI, Remote Layer, Machine Control) are not affected by PC->Console synchronization operations.

Only one Session can be open at a time, so when you create a new Session, or open a previously saved Session, the message “This operation will purge current session” appears. If there are no unsaved changes, or you do not want to save, click OK. If Studio Manager is offline, the Session is loaded. If Studio Manager is online, the Session is loaded and the synchronization dialog box appears.

5 Troubleshooting

Cannot control your Yamaha mixing console via USB?

- Have you installed the Yamaha USB MIDI driver (Windows page 8, Mac page 17)?
- Is the USB cable connected correctly (page 7)?
- Is your Yamaha mixing console configured correctly (page 7)?
- Is Studio Manager set to the correct ID? (see the Studio Manager documentation)
- **Macintosh:** Is OMS configured correctly (page 19)? On some systems, the included OMS studio setup files may not work correctly. In this case, you must create a new studio setup. See the “OMS_2.3_Mac.pdf” for more information.

Cannot install the Yamaha USB MIDI Driver?

- Is the USB cable connected correctly (page 7)?
- Try disconnecting the USB cable, and then reconnecting it.
- **Windows:** Is USB enabled? When your Yamaha mixing console is connected to your computer for the first time, if the Add New Hardware Wizard doesn't appear, it may be because your computer's USB controller is disabled. To check this, open the System control panel, click the Device Manager tab, and check for any crosses (x) or exclamation points (!) next to the “Universal Serial Bus controllers” and “USB Root Hub” items. If these items do have these marks next to them, your USB controller is disabled. For information on enabling your USB controller, refer to your computer's documentation.
- **Windows:** If for some reason installation of the Yamaha USB Driver fails, your Yamaha mixing console may be registered as an unknown device and you may not be able to reinstall the driver until the unknown device is deleted. In this case, open the System control panel, click the Device Manager tab, and select the “View devices by connection” option. If an item called “Other devices” appears in the list, click it. If there's an item called “Unknown device,” select it and then click the Remove button. Disconnect the USB cable, reconnect it, and then try reinstalling the driver again.

OMS stops working after installing the Yamaha USB MIDI Driver?

- **Macintosh:** The Yamaha USB MIDI Driver supports Mac OS 8.6 through 9.2.2. If you install it on a computer that is running an earlier version of the Mac OS, OMS will not work correctly. In this case you should remove the Yamaha USB MIDI Driver as explained below.

How to remove & reinstall the Yamaha USB MIDI Driver

- **Windows 98/Me:** Presuming that the Yamaha USB MIDI Driver was installed successfully, and that your Yamaha mixing console has been recognized correctly, the driver can be removed from your computer as follows. Open the System control panel, click the Device Manager tab, select the “YAMAHA USB MIDI Driver,” and then click the Remove button. After deleting the following files, disconnect the USB cable, reconnect it, and then reinstall the driver again.

Windows\Inf\Other\YAMAHADM2000.INF (or YAMAHA02R96.INF or YAMAHADM1000.INF or YAMAHA01V96.INF)

Windows\System\Xgusb.drv

Windows\System\Ymidusb.sys

- **Macintosh:** The driver can be removed from your computer by deleting the following files, after which you should restart your computer, reinstall the driver, and then set up OMS.
System Folder:Control Panels:YAMAHA USB MIDI Patch
System Folder:Extensions:USB YAMAHA MIDI Diver
System Folder:OMS Folder:YAMAHA USB MIDI OMS Driver

Improving performance

- If your computer seems unresponsive, make sure it satisfies the system requirements (Windows page 5, Mac page 6).
- Quit any other applications that you are not using.
- **Macintosh:** Try turning off virtual memory and AppleTalk.

Cannot suspend or resume your computer?

- **Windows:** Suspend will not work if there are any MIDI applications open.
- **Windows 2000:** Depending on your system's USB controller, suspend and resume may not work properly. If your Yamaha mixing console does stop responding, try disconnecting and reconnecting the USB cable.

Software Licensing Agreement

The following is a legal agreement between you, the end user, and Yamaha Corporation (“Yamaha”). The enclosed Yamaha software program is licensed by Yamaha to the original purchaser for use only on the terms set forth herein. Please read this licensing agreement with care. Opening this package indicates that you accept all terms outlined herein. If you do not agree to the terms, return this package unopened to Yamaha for a full refund.

GRANT OF LICENSE AND COPYRIGHT: Yamaha grants you, the original purchaser, the right to use one copy of the enclosed software program and data (“SOFTWARE”) on a single-user computer system. You may not use it on more than one computer or computer terminal. The SOFTWARE is owned by Yamaha and is protected by Japanese copyright laws and all applicable international treaty provisions. You are entitled to claim ownership of the media in which the SOFTWARE is included. Therefore, you must treat the SOFTWARE like any other copyrighted materials.

RESTRICTIONS: The SOFTWARE program is copyrighted. You may not engage in reverse engineering or reproduction of the SOFTWARE by other conceivable methods. You may not reproduce, modify, change, rent, lease, resell, or distribute the SOFTWARE in whole or in part, or create derivative works from the SOFTWARE. You may not transmit or network the SOFTWARE with other computers. You may transfer ownership of the SOFTWARE and the accompanying written materials on a permanent basis provided that you retain no copies and the recipient agrees to the terms of the licensing agreement.

TERMINATION: The licensing condition of the software program becomes effective on the day that you receive the SOFTWARE. If any one of the copyright laws or clauses of the licensing conditions is violated, the licensing agreement shall be terminated automatically without notice from Yamaha. In this case, you must destroy the licensed SOFTWARE and its copies immediately.

PRODUCT WARRANTY: Yamaha warrants to the original purchaser that if the SOFTWARE, when used in normal conditions, will not perform the functions described in the manual provided by Yamaha, the sole remedy will be that Yamaha will replace any media which proves defective in materials or workmanship on an exchange basis without charge. Except as expressly set forth above, the SOFTWARE is provided “as is,” and no other warranties, either expressed or implied, are made with respect to this software, including, without limitation the implied warranties of merchantability and fitness for a particular purpose.

LIMITED LIABILITY: Your sole remedies and Yamaha’s entire liability are as set forth above. In no event will Yamaha be liable to you or any other person for any damages, including without limitation any incidental or consequential damages, expenses, lost profits, lost savings or other damages arising out of the use or inability to use such SOFTWARE even if Yamaha or an authorized dealer has been advised of the possibility of such damages, or for any claim by any other party.

GENERAL: This license agreement shall be interpreted according to and governed by Japanese laws.

For details of products, please contact your nearest Yamaha representative or the authorized distributor listed below.

Pour plus de détails sur les produits, veuillez-vous adresser à Yamaha ou au distributeur le plus proche de vous figurant dans la liste suivante.

Die Einzelheiten zu Produkten sind bei Ihrer unten aufgeführten Niederlassung und bei Yamaha Vertragshändlern in den jeweiligen Bestimmungsländern erhältlich.

Para detalles sobre productos, contacte su tienda Yamaha más cercana o el distribuidor autorizado que se lista debajo.

NORTH AMERICA

CANADA

Yamaha Canada Music Ltd.
135 Milner Avenue, Scarborough, Ontario,
M1S 3R1, Canada
Tel: 416-298-1311

U.S.A.

Yamaha Corporation of America
6600 Orangethorpe Ave., Buena Park, Calif. 90620,
U.S.A.
Tel: 714-522-9011

CENTRAL & SOUTH AMERICA

MEXICO

**Yamaha de Mexico S.A. De C.V.,
Departamento de ventas**
Javier Rojo Gomez No.1149, Col. Gpe Del
Moral, Deleg. Iztapalapa, 09300 Mexico, D.F.
Tel: 686-00-33

BRAZIL

Yamaha Musical do Brasil LTDA.
Av. Rebouças 2636, São Paulo, Brasil
Tel: 011-853-1377

ARGENTINA

**Yamaha Music Latin America, S.A.
Sucursal de Argentina**
Viamonte 1145 Piso2-B 1053,
Buenos Aires, Argentina
Tel: 1-4371-7021

PANAMA AND OTHER LATIN AMERICAN COUNTRIES/ CARIBBEAN COUNTRIES

Yamaha Music Latin America, S.A.
Torre Banco General, Piso 7, Urbanización Marbella,
Calle 47 y Aquilino de la Guardia,
Ciudad de Panamá, Panamá
Tel: +507-269-5311

EUROPE

THE UNITED KINGDOM

Yamaha-Kemble Music (U.K.) Ltd.
Sherbourne Drive, Tilbrook, Milton Keynes,
MK7 8BL, England
Tel: 01908-366700

GERMANY

Yamaha Music Central Europe GmbH
Siemensstraße 22-34, 25462 Rellingen, Germany
Tel: 04101-3030

SWITZERLAND/LIECHTENSTEIN

**Yamaha Music Central Europe GmbH,
Branch Switzerland**
Seefeldstrasse 94, 8008 Zürich, Switzerland
Tel: 01-383 3990

AUSTRIA

**Yamaha Music Central Europe GmbH,
Branch Austria**
Schleiergasse 20, A-1100 Wien, Austria
Tel: 01-60203900

THE NETHERLANDS

**Yamaha Music Central Europe,
Branch Nederland**
Clarissenhof 5-b, 4133 AB Vianen, The Netherlands
Tel: 0347-358 040

BELGIUM/LUXEMBOURG

**Yamaha Music Central Europe GmbH,
Branch Belgium**
Rue de Geneve (Genevastraat) 10, 1140 - Brussels,
Belgium
Tel: 02-726 6032

FRANCE

**Yamaha Musique France, S.A.
Division Professionnelle**
BP 70-77312 Marne-la-Vallée Cedex 2, France
Tel: 01-64-61-4000

ITALY

**Yamaha Musica Italia S.P.A.
Combo Division**
Viale Italia 88, 20020 Lainate (Milano), Italy
Tel: 02-935-771

SPAIN/PORTUGAL

Yamaha-Hazen Música, S.A.
Ctra. de la Coruna km. 17, 200, 28230
Las Rozas (Madrid), Spain
Tel: 91-639-8888

SWEDEN

Yamaha Scandinavia AB
J. A. Wettergrens Gata 1
Box 30053
S-400 43 Göteborg, Sweden
Tel: 031 89 34 00

DENMARK

YS Copenhagen Liaison Office
Generatorvej 8B
DK-2730 Herlev, Denmark
Tel: 44 92 49 00

NORWAY

Norsk filial av Yamaha Scandinavia AB
Grini Næringspark 1
N-1345 Østerås, Norway
Tel: 67 16 77 70

OTHER EUROPEAN COUNTRIES

Yamaha Music Central Europe GmbH
Siemensstraße 22-34, 25462 Rellingen, Germany
Tel: +49-4101-3030

AFRICA

**Yamaha Corporation,
Asia-Pacific Music Marketing Group**
Nakazawa-cho 10-1, Hamamatsu, Japan 430-8650
Tel: +81-53-460-2313

MIDDLE EAST

TURKEY/CYPRUS

Yamaha Music Central Europe GmbH
Siemensstraße 22-34, 25462 Rellingen, Germany
Tel: 04101-3030

OTHER COUNTRIES

Yamaha Music Gulf FZE
LB21-128 Jebel Ali Freezone
P.O.Box 17328, Dubai, U.A.E.
Tel: +971-4-881-5868

ASIA

INDONESIA

**PT. Yamaha Music Indonesia (Distributor)
PT. Nusantik**
Gedung Yamaha Music Center, Jalan Jend. Gatot
Subroto Kav. 4, Jakarta 12930, Indonesia
Tel: 21-520-2577

KOREA

Yamaha Music Korea Ltd.
Tong-Yang Securities Bldg. 16F 23-8 Yoido-dong,
Youngdungpo-ku, Seoul, Korea
Tel: 02-3770-0661

MALAYSIA

Yamaha Music Malaysia, Sdn., Bhd.
Lot 8, Jalan Perbandaran, 47301 Kelana Jaya,
Petaling Jaya, Selangor, Malaysia
Tel: 3-703-0900

SINGAPORE

Yamaha Music Asia Pte., Ltd.
11 Ubi Road #06-00, Meiban Industrial Building,
Singapore
Tel: 65-747-4374

TAIWAN

Yamaha KHS Music Co., Ltd.
3F, #6, Sec.2, Nan Jing E. Rd. Taipei.
Taiwan 104, R.O.C.
Tel: 02-2511-8688

THAILAND

Siam Music Yamaha Co., Ltd.
121/60-61 RS Tower 17th Floor,
Ratchadaphisek RD., Dindaeng,
Bangkok 10320, Thailand
Tel: 02-641-2951

THE PEOPLE'S REPUBLIC OF CHINA

**Yamaha Music & Electronics (China) Co., Ltd.
Shanghai Branch**
United Plaza 25F 1468 Nan Jing Road West
Jingan Shanghai 200040, China
Tel: 21-6247-2211

OTHER ASIAN COUNTRIES

**Yamaha Corporation,
Asia-Pacific Music Marketing Group**
Nakazawa-cho 10-1, Hamamatsu, Japan 430-8650
Tel: +81-53-460-2313

OCEANIA

AUSTRALIA

Yamaha Music Australia Pty. Ltd.
Level 1, 99 Queensbridge Street, Southbank,
Victoria 3006, Australia
Tel: 3-9693-5111

COUNTRIES AND TRUST TERRITORIES IN PACIFIC OCEAN

**Yamaha Corporation,
Asia-Pacific Music Marketing Group**
Nakazawa-cho 10-1, Hamamatsu, Japan 430-8650
Tel: +81-53-460-2313

HEAD OFFICE Yamaha Corporation, Pro Audio & Digital Musical Instrument Division
Nakazawa-cho 10-1, Hamamatsu, Japan 430-8650
Tel: +81-53-460-2441



Yamaha Manual Library
<http://www2.yamaha.co.jp/manual/english/>

This document is printed on recycled chlorine free (ECF) paper with soy ink.

M.D.G., Pro Audio & Digital Musical Instrument Division, Yamaha Corporation
© 2003 Yamaha Corporation
WA88390 306IPAP24.2-02B0
Printed in Japan