

YAMAHA DME Converter

User's Manual

Copyright Yamaha Corporation. All rights reserved.

This documentation may not be copied or duplicated, in whole or in part, without the consent of Yamaha.

In no event will Yamaha be liable for any loss or damage, direct or indirect, from the use of this software.

Windows is a registered trademark of Microsoft Corporation in the U.S. and other countries.

AutoCAD is a registered trademark of AutoDesk, Inc. in the U.S. and other countries.

Introduction

This software converts DME files stored in DME Manager into AutoCAD DXF files.

Contents

- Installation 1
- Program Operations 5
- Conversion Specifications..... 8
- Message List 10

■ Installation

System Requirements

Operating System

- Windows 95
- Windows 98
- Windows ME
- Windows NT 4.0
- Windows 2000

Hardware

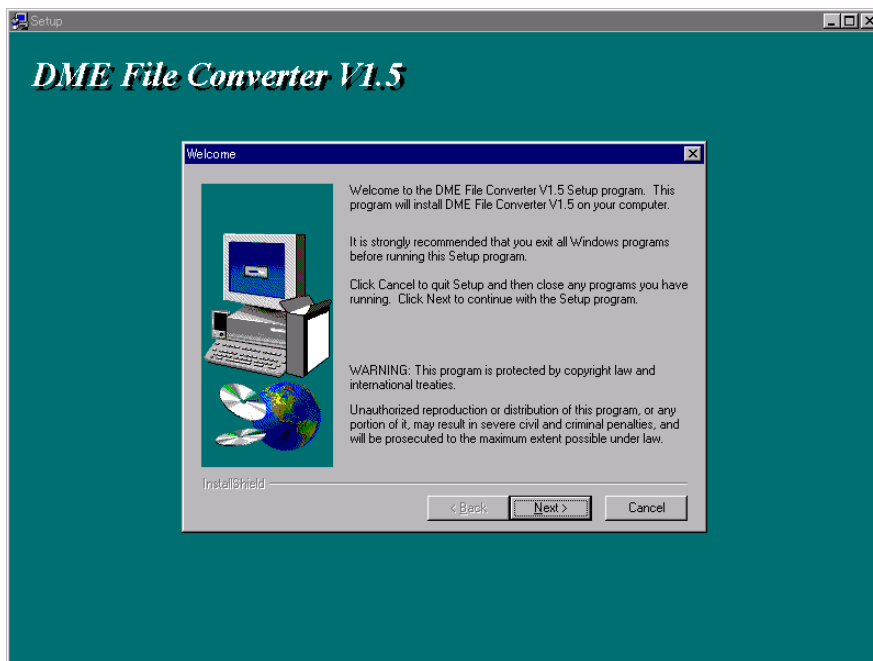
- Environment the 'Software' above can operate
- 5MB free hard disk space
- 640x480 dpi video resolution, or above

Installation Procedure

1. Insert the DME FILE Convert V1.5 CD-ROM into CD drive.

2. Setup program will start.

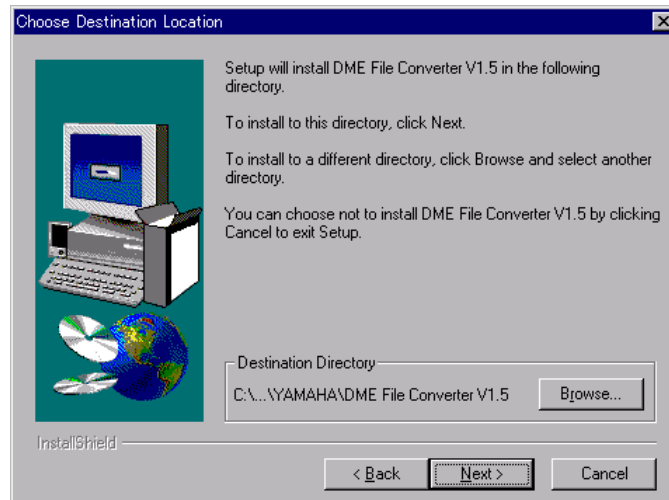
If setup program does not start, go to CD-ROM drive folder using Explorer etc. and double-click setup.exe.



3. Specify a folder that the software will be installed to.

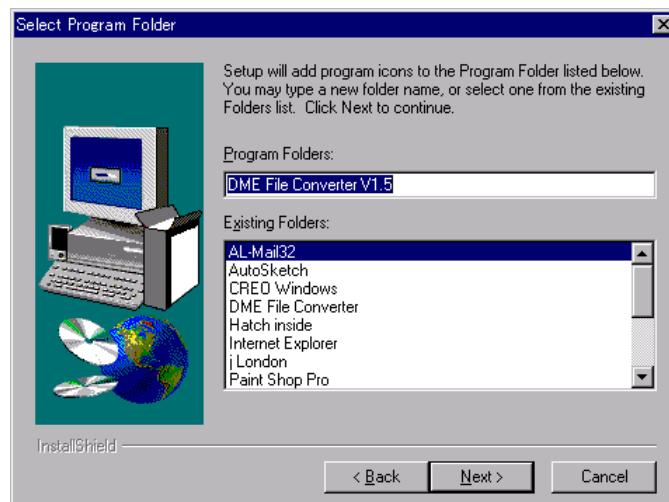
To change the folder, click Browse... and specify a folder.

Click Next>.

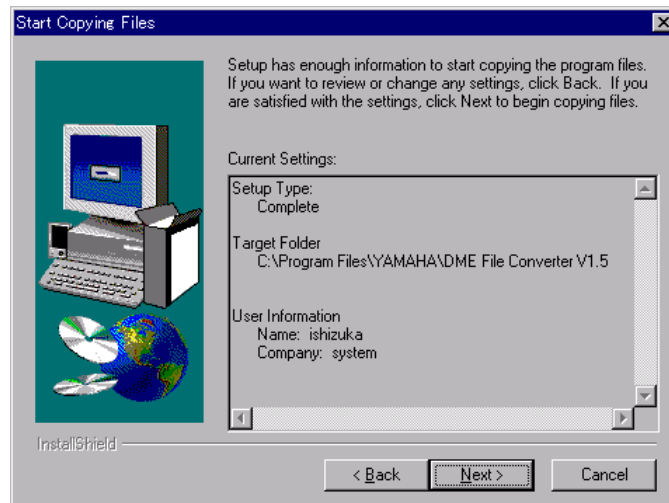


4. Specify a program folder name.

Click Next>.



5. Click Next>.

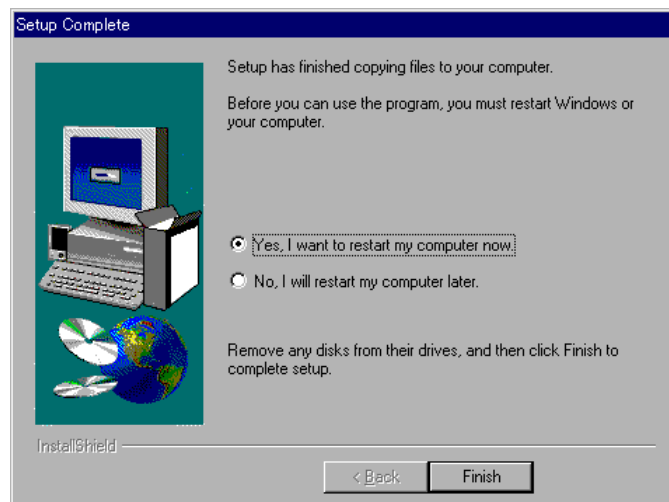


6. Now the setup has completed.

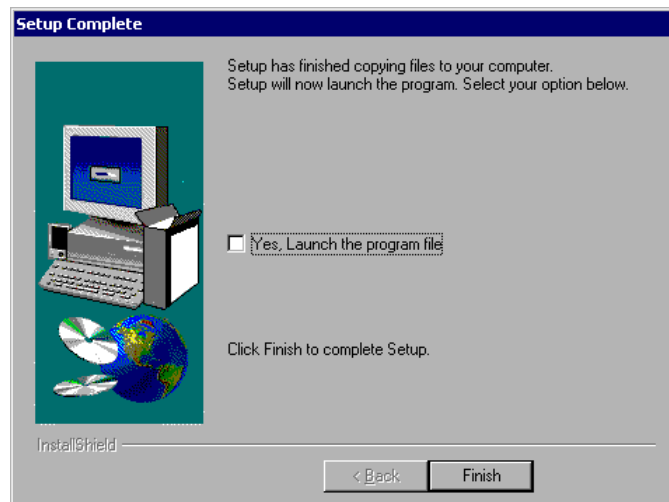
If the system file has been updated, the screen below will appear.

If you do not select Restart, the operations may not be guaranteed.

Click Finish.



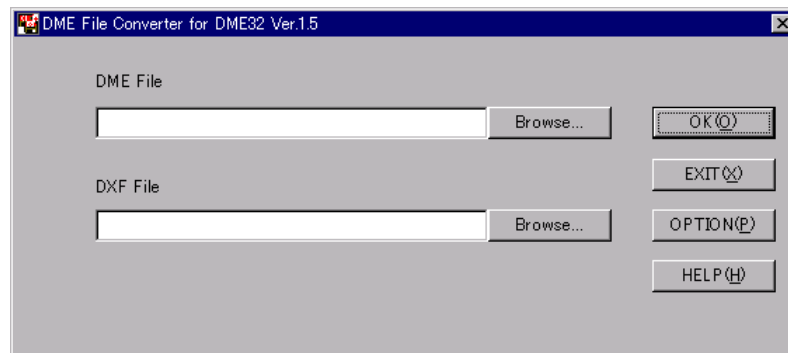
If the system file has not been updated, the screen below will appear.
When you check 'Yes, Launch the program file.', the program will start immediately.
Click Finish.



■ Program Operations

1. To start the program:

Click Start | Program | DME File Converter V1.5.

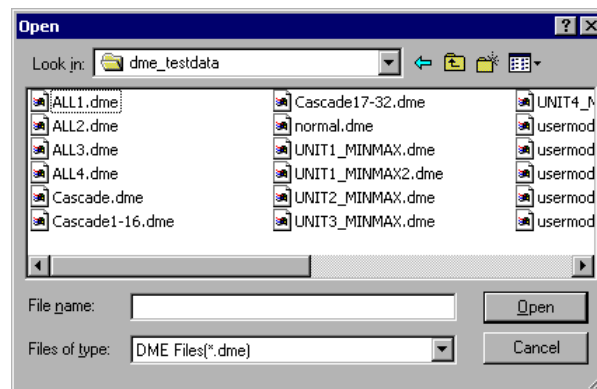


2. To specify a file:

Enter a file name saved in DME Manager in DME File field.

Enter a DXF file name in DXF File field.

You can select a file from the file browser by clicking Browse...



3. To execute conversion:

Click OK to execute file conversion.

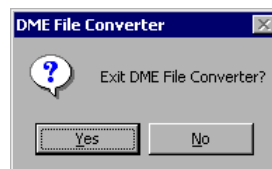
When convert complete message appear, click OK.



4. To exit the program:

Click EXIT to exit the program by clicking EXIT.

Click Yes.



5. To configure file conversion settings:
Click OPTION.

Scale	Specify a scale to be used for conversion. You can input directly from the keyboard. Ex. 1/1000, 3/2, 10/1
Layer Name	Specify a layer name. You can omit this field.
Text Style	Specify a text style.
Block	Select Block/Explode. Block: Convert components into BLOCKs. Explode: Convert components into POLYLINEs.
Paper Size	Specify a paper size. To specify a size that is not in the list, select User Size and input sizes in Horizon and Vertical.
Orientation	Select a paper orientation.
OK	Specified configuration will be set
CANCEL	Specified configuration will not be set.

■ Conversion Specifications

1. Data Format

Files are converted to DXF files in AutoCAD R14 format.

DME	DXF
Component geometries	LWPOLYLINE
Terminals	LWPOLYLINE
Cross lines	LWPOLYLINE
Component names	TEXT

2. Block Specification

If you selected the Block option, component geometries and terminals will be blocked.

3. Layer Specification

Each UNIT in DME Manager is converted into separate layer. All Units except first one are converted in "Hidden".

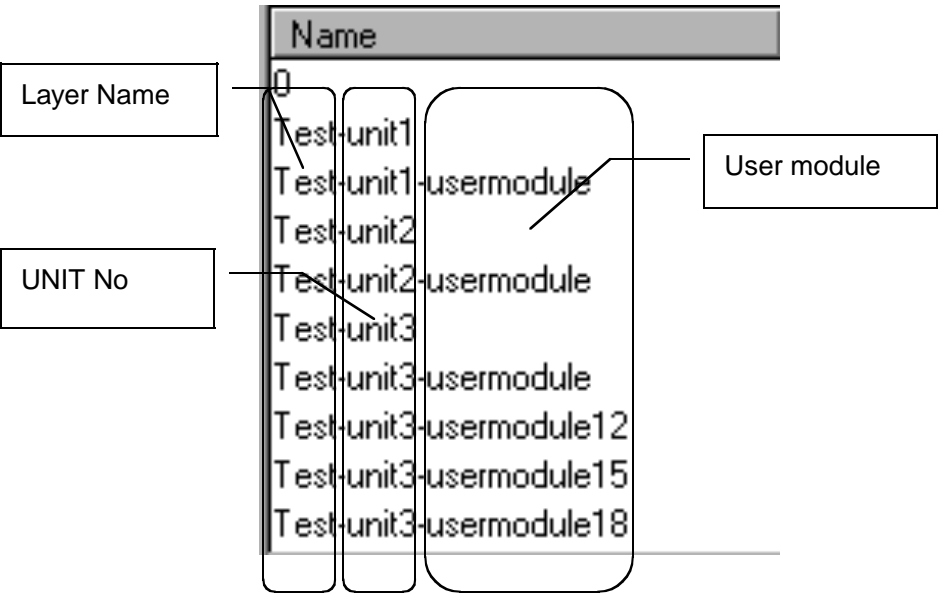
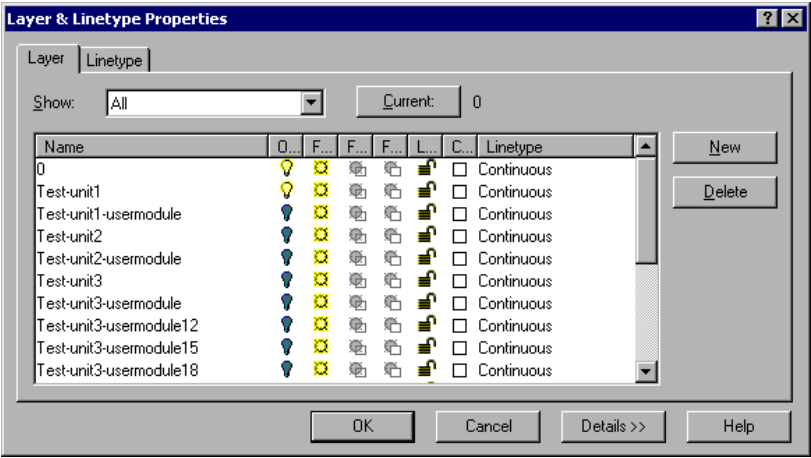
UNIT No	LAYER NAME
UNIT No 1	Unit1
UNIT No 2	Unit2
UNIT No 3	Unit3
UNIT No 4	Unit4

If you selected the Layer Name option, the value you entered will be preceded to image names. For example, if you enter "YAMAHA", the image name would be Yamaha-Unit1.

Each user module picture is converted into separate layer.

User module No	LAYER NAME
usermodule	Unit1-usermodule
usermodule(2)	Unit1-usermodule2
usermodule(3)	Unit1-usermodule3
usermodule(4)	Unit1-usermodule4

Layer and line type properties in AutoCAD R14



■ Message List

1. File conversion messages

Message	Can't open DME File
Cause	Specified DME file does not exist or cannot be opened.

Message	Can't create DXF File
Cause	Specified folder for the DXF file does not exist.

Message	Please input DME Filename
Cause	You executed conversion without specifying a DME file.

Message	Please input DXF Filename
Cause	You executed conversion without specifying a DXF file.

Message	DXF filename too long
Cause	Specified DXF filename is too long.

Message	DXF file same as DME file
Cause	Specified DXF filename already exists.

Message	It is not a DME file format
Cause	It is not a DME Manager file.

Message	It failed in writing of the DXF file
Cause	An error was occurred during DXF file output.

2. Option setting messages

Message	The value of the Scale is too big
Cause	Scale value is too big. Maximum value is 999999/1.

Message	The value of the Scale is too small
Cause	Scale value is too small. Minimum value is 1/999999.

Message	Specify bigger integer value than 0 in the molecule of the scale and the denominator
Cause	Input value or format is not correct. The value should be in fraction format. Divide by 0 or decimal point was specified.

Message	Specify numerical value to 100 from 100000 in the Horizon
Cause	Specified value in Horizon is outside the limits.

Message	Specify numerical value to 100 from 100000 in the Vertical
Cause	Input value in Vertical is outside the limits.

Message	Specify numerical value to 3.00 from 4000.00 in the Horizon
Cause	Specified value in Horizon is outside the limits.

Message	Specify numerical value to 3.00 from 4000.00 in the Vertical
Cause	Input value in Vertical is outside the limits.