



Yamaha Steinberg FW Driver Installation Guide

ATTENTION

SOFTWARE LICENSE AGREEMENT

PLEASE READ THIS SOFTWARE LICENSE AGREEMENT (“AGREEMENT”) CAREFULLY BEFORE USING THIS SOFTWARE. YOU ARE ONLY PERMITTED TO USE THIS SOFTWARE PURSUANT TO THE TERMS AND CONDITIONS OF THIS AGREEMENT. THIS AGREEMENT IS BETWEEN YOU (AS AN INDIVIDUAL OR LEGAL ENTITY) AND YAMAHA CORPORATION (“YAMAHA”).

BY DOWNLOADING, INSTALLING, COPYING, OR OTHERWISE USING THIS SOFTWARE YOU ARE AGREEING TO BE BOUND BY THE TERMS OF THIS LICENSE. IF YOU DO NOT AGREE WITH THE TERMS, DO NOT DOWNLOAD, INSTALL, COPY, OR OTHERWISE USE THIS SOFTWARE. IF YOU HAVE DOWNLOADED OR INSTALLED THE SOFTWARE AND DO NOT AGREE TO THE TERMS, PROMPTLY DELETE THE SOFTWARE.

1. GRANT OF LICENSE AND COPYRIGHT

Yamaha hereby grants you the right to use one copy of the software program(s) and data (“SOFTWARE”) accompanying this Agreement. The term SOFTWARE shall encompass any updates to the accompanying software and data. The SOFTWARE is owned by Yamaha and/or Yamaha’s licensor(s), and is protected by relevant copyright laws and all applicable treaty provisions. While you are entitled to claim ownership of the data created with the use of SOFTWARE, the SOFTWARE will continue to be protected under relevant copyrights.

- **You may** use the SOFTWARE on a **single computer**.
- **You may** make one copy of the SOFTWARE in machine-readable form for backup purposes only, if the SOFTWARE is on media where such backup copy is permitted. On the backup copy, you must reproduce Yamaha’s copyright notice and any other proprietary legends that were on the original copy of the SOFTWARE.
- **You may** permanently transfer to a third party all your rights in the SOFTWARE, provided that you do not retain any copies and the recipient reads and agrees to the terms of this Agreement.

2. RESTRICTIONS

- **You may not** engage in reverse engineering, disassembly, decompilation or otherwise deriving a source code form of the SOFTWARE by any method whatsoever.
- **You may not** reproduce, modify, change, rent, lease, or distribute the SOFTWARE in whole or in part, or create derivative works of the SOFTWARE.
- **You may not** electronically transmit the SOFTWARE from one computer to another or share the SOFTWARE in a network with other computers.
- **You may not** use the SOFTWARE to distribute illegal data or data that violates public policy.
- **You may not** initiate services based on the use of the SOFTWARE without permission by Yamaha Corporation.
- Copyrighted data, including but not limited to MIDI data for songs, obtained by means of the SOFTWARE, are subject to the following restrictions which you must observe.

- Data received by means of the SOFTWARE may not be used for any commercial purposes without permission of the copyright owner.
- Data received by means of the SOFTWARE may not be duplicated, transferred, or distributed, or played back or performed for listeners in public without permission of the copyright owner.
- The encryption of data received by means of the SOFTWARE may not be removed nor may the electronic watermark be modified without permission of the copyright owner.

3. TERMINATION

This Agreement becomes effective on the day that you receive the SOFTWARE and remains effective until terminated. If any copyright law or provisions of this Agreement is violated, the Agreement shall terminate automatically and immediately without notice from Yamaha. Upon such termination, you must immediately destroy the licensed SOFTWARE, any accompanying written documents and all copies thereof.

4. DISCLAIMER OF WARRANTY ON SOFTWARE

You expressly acknowledge and agree that use of the SOFTWARE is at your sole risk. The SOFTWARE and related documentation are provided “AS IS” and without warranty of any kind. NOTWITHSTANDING ANY OTHER PROVISION OF THIS AGREEMENT, YAMAHA EXPRESSLY DISCLAIMS ALL WARRANTIES AS TO THE SOFTWARE, EXPRESS, AND IMPLIED, INCLUDING BUT NOT LIMITED TO THE IMPLIED WARRANTIES OF MERCHANTABILITY, FITNESS FOR A PARTICULAR PURPOSE AND NON-INFRINGEMENT OF THIRD PARTY RIGHTS. SPECIFICALLY, BUT WITHOUT LIMITING THE FOREGOING, YAMAHA DOES NOT WARRANT THAT THE SOFTWARE WILL MEET YOUR REQUIREMENTS, THAT THE OPERATION OF THE SOFTWARE WILL BE UNINTERRUPTED OR ERROR-FREE, OR THAT DEFECTS IN THE SOFTWARE WILL BE CORRECTED.

5. LIMITATION OF LIABILITY

YAMAHA'S ENTIRE OBLIGATION HEREUNDER SHALL BE TO PERMIT USE OF THE SOFTWARE UNDER THE TERMS HEREOF. IN NO EVENT SHALL YAMAHA BE LIABLE TO YOU OR ANY OTHER PERSON FOR ANY DAMAGES, INCLUDING, WITHOUT LIMITATION, ANY DIRECT, INDIRECT, INCIDENTAL OR CONSEQUENTIAL DAMAGES, EXPENSES, LOST PROFITS, LOST DATA OR OTHER DAMAGES ARISING OUT OF THE USE, MISUSE OR INABILITY TO USE THE SOFTWARE, EVEN IF YAMAHA OR AN AUTHORIZED DEALER HAS BEEN ADVISED OF THE POSSIBILITY OF SUCH DAMAGES. In no event shall Yamaha's total liability to you for all damages, losses and causes of action (whether in contract, tort or otherwise) exceed the amount paid for the SOFTWARE.

6. THIRD PARTY SOFTWARE

Third party software and data ("THIRD PARTY SOFTWARE") may be attached to the SOFTWARE. If, in the written materials or the electronic data accompanying the Software, Yamaha identifies any software and data as THIRD PARTY SOFTWARE, you acknowledge and agree that you must abide by the provisions of any Agreement provided with the THIRD PARTY SOFTWARE and that the party providing the THIRD PARTY SOFTWARE is responsible for any warranty or liability related to or arising from the THIRD PARTY SOFTWARE. Yamaha is not responsible in any way for the THIRD PARTY SOFTWARE or your use thereof.

- Yamaha provides no express warranties as to the THIRD PARTY SOFTWARE. IN ADDITION, YAMAHA EXPRESSLY DISCLAIMS ALL IMPLIED WARRANTIES,

INCLUDING BUT NOT LIMITED TO THE IMPLIED WARRANTIES OF MERCHANTABILITY AND FITNESS FOR A PARTICULAR PURPOSE, as to the THIRD PARTY SOFTWARE.

- Yamaha shall not provide you with any service or maintenance as to the THIRD PARTY SOFTWARE.
- Yamaha is not liable to you or any other person for any damages, including, without limitation, any direct, indirect, incidental or consequential damages, expenses, lost profits, lost data or other damages arising out of the use, misuse or inability to use the THIRD PARTY SOFTWARE.

7. GENERAL

This Agreement shall be interpreted according to and governed by Japanese law without reference to principles of conflict of laws. Any dispute or procedure shall be heard before the Tokyo District Court in Japan. If for any reason a court of competent jurisdiction finds any portion of this Agreement to be unenforceable, the remainder of this Agreement shall continue in full force and effect.

8. COMPLETE AGREEMENT

This Agreement constitutes the entire agreement between the parties with respect to use of the SOFTWARE and any accompanying written materials and supersedes all prior or contemporaneous understandings or agreements, written or oral, regarding the subject matter of this Agreement. No amendment or revision of this Agreement will be binding unless in writing and signed by a fully authorized representative of Yamaha.

SPECIAL NOTICES

- The software and this Installation Guide are the exclusive copyrights of Yamaha Corporation.
- Please read carefully the Software Licensing Agreement at the front of this Installation Guide before installing the software.
- Copying of the software or reproduction of this Installation Guide in whole or in part by any means is expressly forbidden without the written consent of the manufacturer.
- Yamaha makes no representations or warranties with regard to the use of the software and documentation and cannot be held responsible for the results of the use of this Installation Guide and the software.
- Future upgrades of application and system software and any changes in specifications and functions will be announced at the following website.
<http://www.yamahasynt.com/>
- The screen displays as illustrated in this Installation Guide are for instructional purposes, and may appear somewhat different from the screens which appear on your computer.
- Copying of the commercially available musical data including but not limited to MIDI data and/or audio data is strictly prohibited except for your personal use.
- Windows is the registered trademark of Microsoft® Corporation.
- Apple, Mac and Macintosh are trademarks of Apple Inc., registered in the U.S. and other countries.
- FireWire and the FireWire symbol are trademarks of Apple Inc.
- The company names and product names in this Installation Guide are the trademarks or registered trademarks of their respective companies.

Contents

SOFTWARE LICENSE AGREEMENT	1	Selecting the Yamaha Steinberg FW Driver	13
SPECIAL NOTICES.....	2	Changing Settings After Installation	14
What is Yamaha Steinberg FW Driver?.....	3	Using Multiple Devices Compatible with Yamaha Steinberg FW Driver.....	17
System Requirements for Software	3	Hints for Using Audio Data (Windows).....	18
How This Guide is Organized.....	5	Troubleshooting	19
Installing the Software.....	6	Appendix.....	21

What is Yamaha Steinberg FW Driver?

Yamaha Steinberg FW Driver enables audio/MIDI signals to be transferred between a computer and devices compatible with the Yamaha Steinberg FW Driver via IEEE1394 cables.

Devices compatible with the Yamaha Steinberg FW Driver include the following. (October 2009)

- Steinberg MR816 CSX/MR816 X
- Yamaha mLAN16E2/n8/n12

NOTE

- The MOTIF XS8 is equipped with the mLAN16E2 as standard.
- Yamaha Steinberg FW Driver requires following software components when using with the mLAN16E2/n8/n12.
 - IEEE1394 Firmware V1.07 or later
 - MOTIF XS V1.10 or later (When using MOTIF XS)
 - n8/n12 V1.03 or later (When using n8/n12)
 - Sweet Spot Data Manager V2.0.0 (When using n8/n12)

You can download the latest version of the software at the following website

<http://www.yamahasynth.com/download/>

- Regarding the latest information about devices compatible with the Yamaha Steinberg FW Driver, see <http://www.yamahasynth.com/>

System Requirements for Software

The system requirements below are necessary for using Yamaha Steinberg FW Driver.

NOTE

- The system requirements below may differ slightly depending on the particular operating system.
 - For details on minimum requirements for each DAW software, refer to the respective owner's manual.

You can check the latest version information of Cubase series and their system requirements at the following website

<http://www.steinberg.net/>
 - You can check the latest version information of Yamaha Steinberg FW Driver and its system requirements at the following website
- <http://www.yamahasynth.com/download/>

■ Windows

OS:	Windows XP Professional SP3/XP Home Edition SP3/Vista SP1 or later/Windows 7
Computer:	Intel Core/Pentium/Celeron family processor, with an S400 (400 Mbps) IEEE1394 (FireWire) or i.Link terminal (*1).
Hard Disk:	Free disk space of 100MB or more(32-bit)/150 MB or more(64-bit); high-speed hard disk

Windows XP Professional SP3/XP Home Edition SP3

• Recommended system requirements (*2)

CPU:	Intel Core 2 Duo 1.66 GHz (or higher)
Available Memory:	512 MB or more

• Minimum system requirements (*2)

CPU:	Intel Pentium 1.4 GHz or Intel Celeron 1.7 GHz (or higher)
Available Memory:	512 MB or more

Windows Vista SP1 or later (32-bit)

• Recommended system requirements (*2)

CPU: Intel Core 2 Duo 2.13 GHz (or higher)
Available Memory: 1 GB or more

• Minimum system requirements (*2)

CPU: Intel Pentium 1.4GHz (or higher)/ Celeron 1.7GHz (or higher)
Available Memory: 512 MB or more

Windows Vista SP1 or later (64-bit)

• Recommended system requirements (*2)

CPU: Intel Core 2 Duo 2.66 GHz (or higher)
Available Memory: 1 GB or more

• Minimum system requirements (*2)

CPU: Intel Core 2 Duo 1.66 GHz (or higher)
Available Memory: 1 GB or more

Windows 7 (32-bit)

• Recommended system requirements (*2)

CPU: Intel Core2 Duo 2.13 GHz (or higher)
Available Memory: 1 GB or more

• Minimum system requirements (*2)

CPU: Intel Pentium 2 GHz (or higher)
Available Memory: 1 GB or more

Windows 7 (64-bit)

• Recommended system requirements (*2)

CPU: Intel Core2 Duo 2.66 GHz (or higher)
Available Memory: 2 GB or more

• Minimum system requirements (*2)

CPU: Intel Core2 Duo 1.66 GHz (or higher)
Available Memory: 2 GB or more

*1 The computer must have an IEEE1394 (FireWire/i.LINK) connector. If there is no connector, install an IEEE1394 interface card (PCI or PC).

*2 The system requirements listed here apply when playing the following audio/MIDI data on the Cubase 4 (Cubase 5 on Windows Vista 64-bit / 7) on the computer connected to a device compatible with the Yamaha Steinberg FW Driver. These may differ depending on the particular DAW you are using.

Recommended system requirements

Frequency/resolution: 44.1 kHz/24-bit
Audio playback tracks: 16
Audio recording tracks: 1
MIDI playback tracks: 18
MIDI Remote Control / Automation Send effects (plug-in): 3
Insert effects (plug-in): 9
Plug-in software synthesizer: 2
Latency: about 6 msec

Minimum system requirements

Frequency/resolution: 44.1 kHz/24-bit
Audio playback tracks: 15
MIDI Remote Control / Automation Send effects (plug-in): 3
Insert effects (plug-in): 9
Plug-in software synthesizer: none
Latency: about 50 msec

NOTE

• When using a laptop or notebook computer, a built-in IEEE1394 terminal may not be available. If this is the case, install an appropriate PC interface card.

■ Macintosh

OS: Mac OS X 10.4.x (Mac OS X 10.4.9 or later for Intel-based Macintosh computer), 10.5.x, 10.6.x

Computer: With a FireWire port

Hard Disk: Free disk space of 100 MB or more; high-speed hard disk

Mac OS X 10.4/10.5

• Recommended system requirements (*1)

CPU: PowerPC G5 2.0 GHz Dual (or higher), or Core Solo 1.5 GHz (or higher)
Available Memory: 1 GB or more

• Minimum system requirements (*1)

CPU: PowerPC G4 1 GHz (or higher)
Available Memory: 512 MB or more

Mac OS X 10.6

• Recommended system requirements (*1)

CPU: Core Duo 1.83 GHz (or higher)
Available Memory: 1 GB or more

• Minimum system requirements (*1)

CPU: Core Solo 1.5 GHz (or higher)
Available Memory: 1 GB or more

*1 The system requirements listed here apply when playing the following audio/MIDI data on the Cubase 4 (Cubase 5 on Mac OS X 10.6) on the computer connected to a device compatible with the Yamaha Steinberg FW Driver. These may differ depending on the particular DAW you are using.

Recommended system requirements

Frequency/resolution: 44.1 kHz/24 bit
Audio playback tracks: 16
Audio recording tracks: 1
MIDI playback tracks: 18
MIDI Remote Control / Automation Send effects (plug-in): 3
Insert effects (plug-in): 9
Plug-in synthesizer: 2
Latency: about 5 msec

Minimum system requirements

Frequency/resolution: 44.1 kHz/24 bit
Audio playback tracks: 15
MIDI Remote Control / Automation Send effects (plug-in): 3
Insert effects (plug-in): 9
Plug-in synthesizer: none
Latency: about 50 msec

How This Guide is Organized

Installing/Uninstalling the software (page 6)

Explains how to install/uninstall Yamaha Steinberg FW Driver for the first time.

Selecting the Yamaha Steinberg FW Driver (page 13)

Explains how to select devices compatible with the Yamaha Steinberg FW Driver in DAW software.

Changing settings after installing (page 14)

Explains how to determine the general settings for devices compatible with the Yamaha Steinberg FW Driver by using the Control Panel Window of the Yamaha Steinberg FW Driver.

Using multiple devices compatible with Yamaha Steinberg FW Driver (page 17)

Explains how to set up the driver when connecting multiple devices compatible with the Yamaha Steinberg FW Driver.

Hints for using audio data (Windows) (page 18)

Explains how to set up the configuration of Windows to use the audio functions correctly.

Troubleshooting (page 19)

Explains how to solve problems that you may encounter while you are using devices compatible with the Yamaha Steinberg FW Driver along with your computer.

Appendix (page 21)

Explains how to uninstall the AI Driver(n Driver) or mLAN Tools/mLAN Driver.

Installing the Software

This software enables you to connect devices compatible with the Yamaha Steinberg FW Driver to a computer and transfer audio/MIDI signals via an IEEE1394 (FireWire) cable.

CAUTION

- *Keep in mind that noise may be generated when installing or uninstalling AI Driver. Before performing either of these operations, make sure to lower the output level of each device.*

If you have already installed AI Driver (n Driver) or mLAN Driver/mLAN Tools on your computer:

■ Windows

Uninstall the driver software before installing the Yamaha Steinberg FW Driver.

For details of uninstalling, refer to [page 22](#).

If you want to use mLAN devices with the same computer, you don't need to uninstall the mLAN Driver/mLAN Tools.

NOTE

- If you are using mLAN Driver/mLAN Tools V1.6.2, update them to V1.6.3 (or higher) before installing the Yamaha Steinberg FW Driver. This is necessary because the Yamaha Steinberg FW Driver cannot work together with the mLAN Driver/mLAN Tools V1.6.2 installed.
- When using the Yamaha Steinberg FW Driver, make sure to disable the mLAN Driver. If this is enabled (on), Yamaha Steinberg FW Driver cannot work because the mLAN Driver uses the IEEE1394 interface.
- When using the mLAN Driver, make sure to turn off any devices compatible with the Yamaha Steinberg FW Driver or disconnect them from the computer before enabling the mLAN driver.
- Note that you may not need to disable the mLAN driver when the computer is equipped with multiple IEEE1394 interfaces and a device compatible with the Yamaha Steinberg FW Driver is connected to the different IEEE1394 interface from the other used by the mLAN driver.

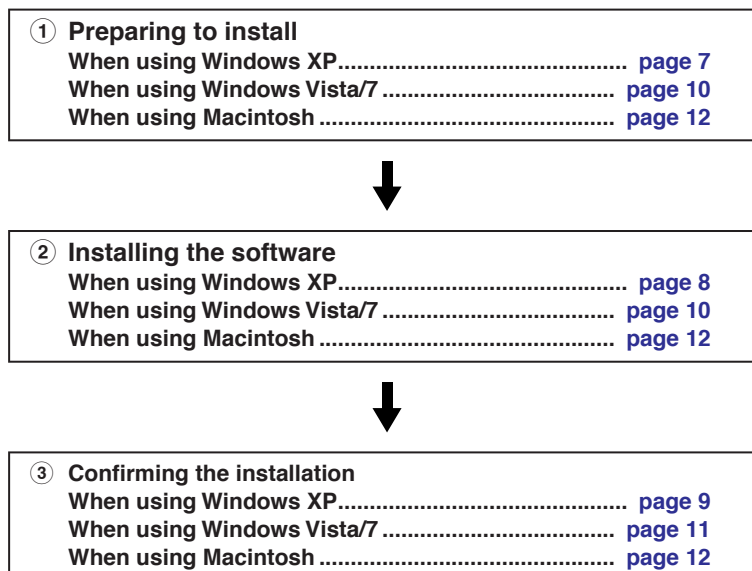
■ Macintosh

You don't need to uninstall the driver software. If you want to uninstall, refer to [page 23](#).

If you have not installed AI Driver (n Driver) or mLAN Driver/mLAN Tools on your computer;

Proceed to the installation of Yamaha Steinberg FW Driver.

Follow the steps below to install these software applications.



NOTE

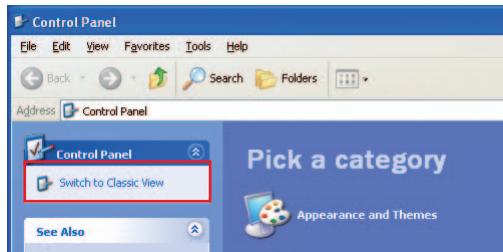
- If you have already installed Yamaha Steinberg FW driver in your computer, you can update the driver software with the same procedure of installation.
- For explanations of the error messages, see [page 21](#).

Installation (Windows XP)

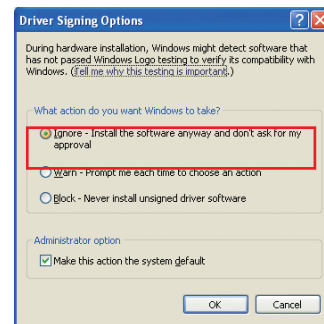
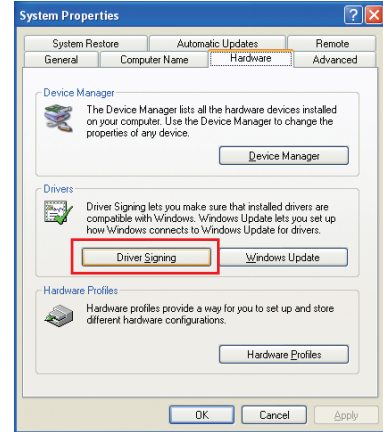
Preparing to Install

- 1 Make sure that the power to the device compatible with the Yamaha Steinberg FW Driver is turned off.
- 2 Using an IEEE1394 cable, connect the device compatible with the Yamaha Steinberg FW Driver directly to the computer (without using a hub), and disconnect all other IEEE1394 devices from the computer.
- 3 Start the computer and log on to the Administrator account.
- 4 Select [Start] (→ [Settings]) → [Control Panel]. If the control panel appears as shown below, click “Switch to Classic View” in the upper left of the window.

All control panels and icons will be displayed.



- 5 Go to [System] → [Hardware] → [Driver Signing] → [Driver Signing Options], and select the radio button to the left of “Ignore - Install the software anyway and don't ask for my approval” and click [OK].



NOTE

- After completing the installation, make sure to restore the original setting if necessary.

- 6 Check that no “!” or “x” marks appear next to “IEEE1394 Bus host controllers” in ([System] → [Hardware] →) [Device Manager].
If one of these marks is shown, the IEEE1394/i.LINK connection cannot be used. Refer to the owner's manual of your computer for details.
- 7 Close the Device Manager window, System Properties window and Control Panel by clicking the [OK] button or the Close button ([X]) of the windows.
- 8 Exit any open applications and close all open windows.

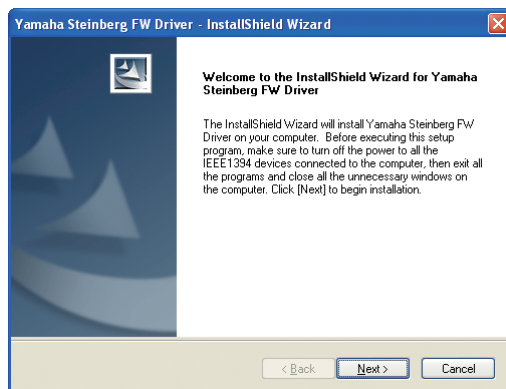
Software Installation

The installer will install the Yamaha Steinberg FW Driver to your computer.

NOTE

- Use the Cancel button or Close button to quit the installation. Quitting by using the [Ctrl]+[Alt]+[Delete] buttons or by turning off the power while installation is in process can result in problems since the installation is terminated without performing a proper uninstall.

- 9** After the downloaded compressed file is properly extracted, double-click the file “setup.exe.” A “Welcome to the InstallShield Wizard for Yamaha Steinberg FW Driver” window appears.



- 10** Click [Next].
The installation starts.

NOTE

- If a message “The software you are installing has not passed Windows Logo Testing” appears, click [Continue Anyway]. You do not need to abort the installation. If the message does not appear, proceed to the next step.

- 11** When installation is complete, a message indicating so appears. If restarting of the computer is necessary following successful completion of the installation, make sure that the radio button to the left of “Yes, I want to restart my computer now” is selected, then click [Finish] to restart the computer. If restarting the computer is unnecessary, click [Finish] to exit the installation process.

When canceling the installation:

If you’ve cancelled an installation before it is complete, the software may not have been installed properly. To install the software properly, resume the procedure from Step 9.

Initial Settings of Driver

After you’ve installed Yamaha Steinberg FW Driver, perform the initial settings of the driver.

NOTE

- A dialog box may appear asking you whether you wish to connect to Windows Update. In this case, select the radio button to the left of “Not at this time,” then click [Next].

Bus Driver Initial Settings

- 12** The “Found New Hardware Wizard” window appears. Select the radio button next to “Install the software automatically [Recommended],” then click [Next].



- 13** When installation is complete, a message indicating so appears, then click [Finish].

NOTE

- If multiple IEEE1394 interfaces have been installed to the computer, the wizard appears several times. Exit the wizard each time.

Initial Driver Settings of the Device Compatible with the Yamaha Steinberg FW Driver

- 14** Turn on the power to the device compatible with the Yamaha Steinberg FW Driver.
The “Found New Hardware Wizard” window is displayed.
- 15** Select the radio button next to “Install the software automatically [Recommended],” then click [Next].
- 16** When installation is complete, a message indicating so appears, then click [Finish].

WDM MIDI Driver Initial Settings

- 17** The “Found New Hardware Wizard” window appears. Select the radio button next to “Install the software automatically [Recommended],” then click [Next].
- 18** When installation is complete, a message indicating so appears, then click [Finish].

NOTE

- This wizard will appear only when using a device compatible with the Yamaha Steinberg FW Driver that is equipped with MIDI terminals.

WDM Audio Driver Initial Settings

- 19** The “Found New Hardware Wizard” window appears. Select the radio button next to “Install the software automatically [Recommended],” then click [Next].
- 20** When installation is complete, a message indicating so appears, then click [Finish].

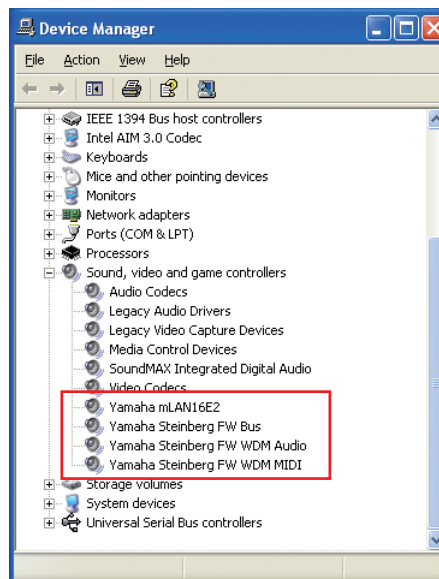
NOTE

- When a new IEEE1394 interface is installed to the computer or the other devices compatible with Yamaha Steinberg FW Driver is connected to the computer, the “Found New Hardware Wizard” window will appear. In that case, finish the wizard in the same way as described here.

Confirming the Installation

- 1** Select [Control Panel] from the Start menu.
- 2** Double-click on the System icon to call up the System Properties window.
- 3** Select the Hardware tab and click [Device Manager].

- 4** Click on the [+] mark next to “Sound, video and game controllers,” and confirm that the name of the device compatible with the Yamaha Steinberg FW Driver, “Yamaha Steinberg FW Bus,” “Yamaha Steinberg FW WDM Audio” and “Yamaha Steinberg FW WDM MIDI” are listed.



NOTE

- The available devices compatible with the Yamaha Steinberg FW Driver are shown as follows;

device	shown name
MR816 CSX/MR816 X	Steinberg MR816 Series
n8/n12	Yamaha n series FW
mLAN16E2	Yamaha mLAN16E2

- “Yamaha Steinberg FW WDM MIDI” appears when connecting a device compatible with the Yamaha Steinberg FW Driver which has MIDI terminals.

Uninstalling the Software

To uninstall Yamaha Steinberg FW Driver, follow the instruction below.

- 1** Make sure the POWER switch on the device compatible with the Yamaha Steinberg FW Driver is set to OFF, exit from any open applications and close all open windows.
- 2** From the Start menu, select ([Settings] →) [Control Panel] → [Add or Remove Programs] to display the Add or Remove Programs panel.
- 3** Click “Change or Remove Programs” located in the upper left, then select “Yamaha Steinberg FW Driver,” from the list in the right panel.
- 4** To uninstall the software, click [Change or Remove].

Follow the instructions to remove the software.

Installation (Windows Vista/7)

Preparing to Install

- 1 Make sure that the power to the device compatible with the Yamaha Steinberg FW Driver is turned off.
- 2 Using an IEEE1394 cable, connect the device compatible with the Yamaha Steinberg FW Driver directly to the computer (without using a hub), and disconnect all other IEEE1394 devices from the computer.
- 3 Start the computer and log on to the Administrator account.
- 4 Select [Start] → [Control Panel].
- 5 Click the “Hardware and Sound” → “Device Manager.”

NOTE

- If the “User Account Control” window appears, click [Continue]. A dialog box appears.

- 6 Check that no “!” or “x” marks appear next to “IEEE1394 Bus host controllers.”
If one of these marks is shown, the IEEE1394/i.LINK connection cannot be used. Refer to the owner’s manual of your computer for details.
- 7 Click the Close button ([x]) at the top right of the Device Manager window, then click the Close button ([x]) at the top right of the Control Panel window to close it.
- 8 Exit any open applications and close all open windows.

Software Installation

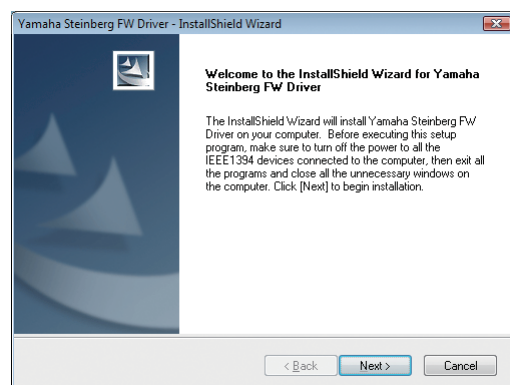
The installer will install the Yamaha Steinberg FW Driver to your computer.

NOTE

- Use the Cancel button or Close button to quit the installation. Quitting by using the [Ctrl]+[Alt]+[Delete] buttons or by turning off the power while installation is in process can result in problems since the installation is terminated without performing a proper uninstall.

- 9 After the downloaded compressed file is properly extracted, double-click the file “setup.exe.”

A “Welcome to the InstallShield Wizard for Yamaha Steinberg FW Driver” window appears.



NOTE

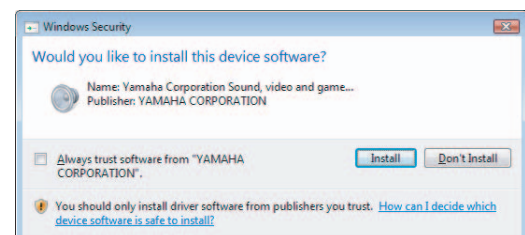
- If the “User Account Control” window appears, click [Continue]. A dialog box appears.

- 10 Click [Next].

The installation starts.

NOTE

- If the “Windows Security” window appears, confirm that the publisher is “YAMAHA CORPORATION,” then click [Install].



- 1 When installation is complete, a message indicating so appears. If restarting of the computer is necessary following successful completion of the installation, make sure that the radio button to the left of “Yes, I want to restart my computer now” is selected, then click [Finish] to restart the computer. If restarting the computer is unnecessary, click [Finish] to exit the installation process.

When canceling the installation

If you’ve cancelled an installation before it is complete, the software may not have been installed properly. To install the software properly, resume the procedure from Step 9.

Initial Settings of Driver

After you’ve installed Yamaha Steinberg FW Driver, perform the initial settings of the driver.

NOTE

- If the “User Account Control” window appears, click [Continue].

- 12 Turn on the power to the device compatible with the Yamaha Steinberg FW Driver.

Initial setup of Yamaha Steinberg FW Driver is automatically started.

NOTE

- If the “User Account Control” window appears when you install a new IEEE1394 interface to the computer, click [Continue].

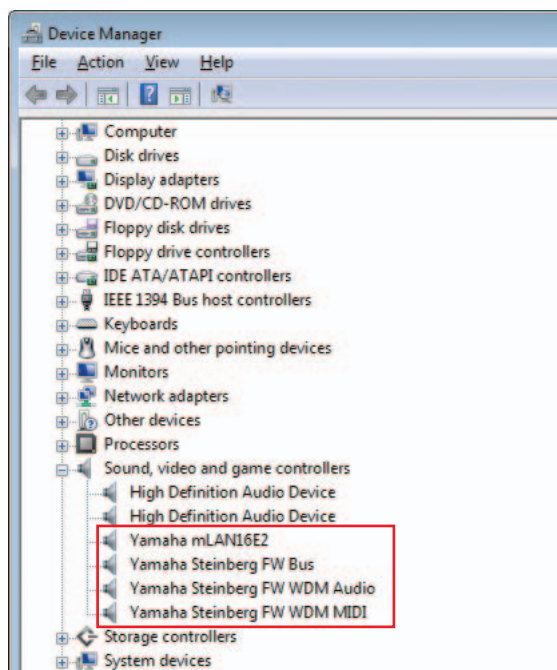
Confirming the Installation

- 1 Select [Control Panel] from the Start menu.
- 2 Click the “Hardware and Sound” → “Device Manager.”

NOTE

- If the “User Account Control” window appears, click [Continue]. A dialog box appears.

- 3 Click on the [+] mark next to “Sound, Video and game controllers” and confirm that the name of the device compatible with the Yamaha Steinberg FW Driver, “Yamaha Steinberg FW Bus,” “Yamaha Steinberg FW WDM Audio” and “Yamaha Steinberg FW WDM MIDI” are listed.



NOTE

- The available devices compatible with the Yamaha Steinberg FW Driver are shown as follows;

device	shown name
MR816 CSX/MR816 X	Steinberg MR816 Series
n8/n12	Yamaha n series FW
mLAN16E2	Yamaha mLAN16E2

- “Yamaha Steinberg FW WDM MIDI” appears when connecting a device compatible with the Yamaha Steinberg FW Driver which has MIDI terminals.

Uninstalling the Software

Follow the instruction below to uninstall the Yamaha Steinberg FW Driver.

- 1 Make sure that the power to the device compatible with the Yamaha Steinberg FW Driver is turned off. Exit any open applications and close all open windows.
- 2 From the Start menu, select [Control Panel] → [Uninstall a Program] to display the Uninstall or change a program panel.
- 3 Select “Yamaha Steinberg FW Driver” from the list.
- 4 To uninstall the software, click [Uninstall/Change].

If the “User Account Control” window appears, click [Continue]. A dialog box appears. Follow the instructions to remove the software.

Installation (Macintosh)

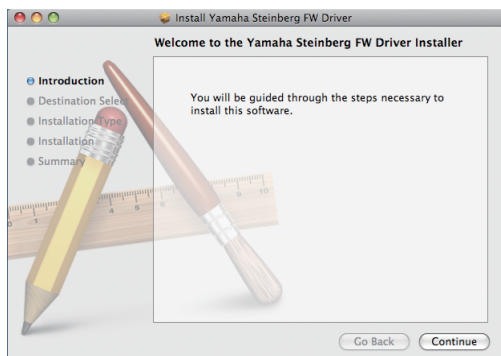
Preparing to Install

- 1 Make sure that the power to the device compatible with the Yamaha Steinberg FW Driver is turned off.
- 2 Using an IEEE1394 (Firewire) cable, connect the device compatible with the Yamaha Steinberg FW Driver directly to the computer (without using a hub), and disconnect all other IEEE1394 devices from the computer.
- 3 Start the computer and log in to the Administrator account.
- 4 Exit any open applications and close all open windows.

Software Installation

- 5 After the downloaded compressed file is properly extracted, double-click the file “Yamaha Steinberg FW Driver.mpkg.”
- 6 A dialog box appears asking if you want to install the software. Click [Continue].

The “Welcome to the Yamaha Steinberg FW Driver Installer” window appears.



- 7 Click [Continue].
The “Select Destination” window appears.

NOTE

- Only the boot disk can be selected for the installer.
- If you are using Mac OS X 10.5/10.6, click [Continue] to call up the “Installation Type” window.

- 8 Click [Continue].
The “Installation Type” window appears.

- 9 Click [Install].
The “Authenticate” window appears.

NOTE

- If an older version of the Yamaha Steinberg FW Driver has already been installed in your computer, [Upgrade] may appear instead of [Install].

- 10 Enter the Administrator name and the password, then click [OK].

A message appears prompting you to restart the computer after the installation.

- 11 Click [Continue Installation].

The “Install” window appears indicating the installation progress. When the installation is complete, the “Finish Up” window or “summary” window appears.

NOTE

- Installation cannot be canceled after clicking [Continue Installation].

- 12 Click [Restart] to restart the computer.

- 13 Turn on the power to the device compatible with the Yamaha Steinberg FW Driver.

When canceling the installation

If you've cancelled an installation before it is complete, the software may not have been installed properly. To install the software properly, resume the procedure from Step 5.

Confirming the Installation

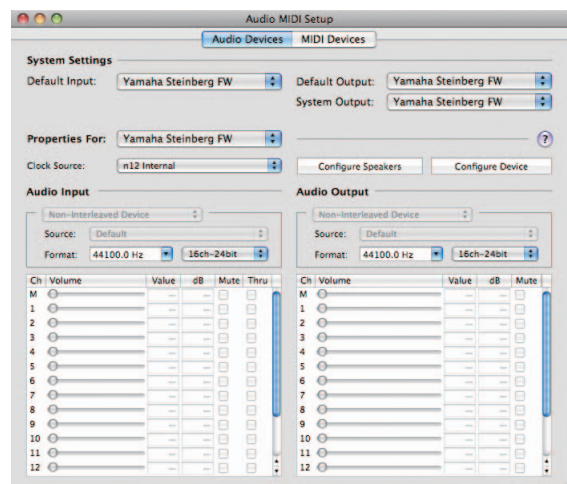
Mac OS X 10.4/10.5

- 1 From the hard disk to which the OS is installed (usually Macintosh HD), click [Applications] → [Utilities], then double-click [Audio MIDI Setup].
The “Audio MIDI Setup” window appears.
- 2 Click [Audio Devices], then select “Yamaha Steinberg FW” from the pull-down menu in [Properties For].

The current audio settings are shown in the [Audio Input] and [Audio Output] fields.

NOTE

- By selecting “Yamaha Steinberg FW” for [Default Output] in System Settings, you can output audio signals of the audio player software (e.g., iTunes, etc.) from the device compatible with the Yamaha Steinberg FW Driver.



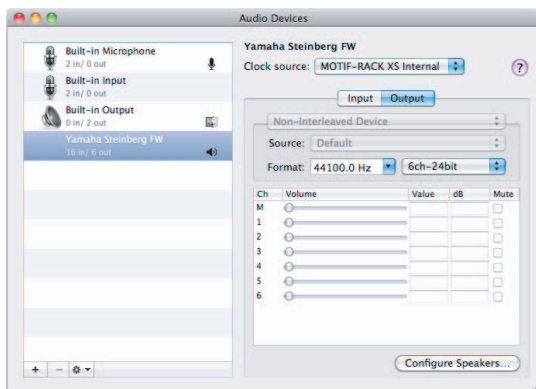
Mac OS X 10.6

- 1 From the hard disk to which the OS is installed (usually Macintosh HD), click [Applications] • [Utilities], then double-click [Audio MIDI Setup]. The “Audio Devices” window appears.
- 2 Select “Yamaha Steinberg FW” from the list of audio devices.

The current audio settings are shown in the right side of the window.

NOTE

- By selecting “using this device for sound output” in the Action menu at the left bottom of the window, you can output audio signals of the audio player software (e.g., iTunes, etc.) from the device compatible with the Yamaha Steinberg FW Driver.



Uninstalling the Software

Removing Yamaha Steinberg FW Driver

Remove the following folders and files from the boot disk (usually Macintosh HD).

```
/Applications/Yamaha/FWDriver/  
    Yamaha Steinberg FW Control Panel.app  
    YamahaFWCM.app  
  
/Library/Application Support/Yamaha/FWDriver/HAL/  
    YamahaFWHAL.bundle  
  
/Library/Audio/MIDI Devices/Yamaha/Images/  
    FW_10000D.tiff  
    FW_10000E.tiff  
    FW_110006.tiff  
    FW_110007.tiff  
    FW_110008.tiff  
    FW_110009.tiff  
  
/Library/Audio/MIDI Drivers/  
    YamahaFWMIDI.plugin  
  
/Library/LaunchAgents/  
    com.yamaha.YamahaFWCM.plist  
  
/Library/PreferencePanes/  
    Yamaha Steinberg FW.prefPane  
  
/Library/Preferences/  
    com.yamaha.FWDriver.plist  
  
/Library/Receipts/  
    YamahaFWAudioDriver.pkg  
    YamahaFWCM.pkg  
    YamahaFWCP.pkg  
    YamahaFWDriverplist.pkg  
    YamahaFWEnabler.pkg  
    YamahaFWHAL.pkg  
    YamahaFWMIDIIcon.pkg  
    YamahaFWMIDIPlugIn.pkg  
  
/System/Library/Extensions/  
    YamahaFWAudioDriver.kext  
  
/System/Library/Frameworks/  
    YamahaFWEnabler.framework  
  
/User/{Account name}/Library/Preference/  
    com.yamaha.YamahaFWCM.plist
```

* “{Account name}” indicates the account name when Yamaha Steinberg FW Driver is installed.

Selecting the Yamaha Steinberg FW Driver

When using devices compatible with the Yamaha Steinberg FW Driver with DAW software, set up the Audio/MIDI driver settings of the DAW software as follows.

Audio Driver

Windows WDM Driver: “Yamaha Steinberg FW WDM Audio”

Windows ASIO Driver: “Yamaha Steinberg FW ASIO”

Macintosh: “Yamaha Steinberg FW”

MIDI Driver

The port name of MIDI driver is shown as “xxx(Device name) xxx (Port name).”

For details on the difference in each port’s features for devices, refer to the owner’s manual of your particular device.

Changing Settings After Installation

This Control Panel window lets you set basic devices compatible with the Yamaha Steinberg FW Driver parameters when using Yamaha Steinberg FW Driver. The Control Panel consists of the General window, device compatible with the Yamaha Steinberg FW Driver window and About window which lets you set the parameters such as sampling rate and WORD CLOCK Source. The settings here are immediately applied to the device compatible with the Yamaha Steinberg FW Driver.

■ How to call up the Control Panel window

Windows:

- Double-click the driver icon indicated on the Taskbar Notification area, or right-click the icon, then select “Control Panel.”
- Select [Start] → [Control Panel] → [Hardware and Sound] → [Yamaha Steinberg FW Driver].
- When using Cubase series Version 4.5 or later, from the Device field on the Device Setup window (called up via [Device]. [Device Setup...]) of Cubase, select “Yamaha Steinberg FW ASIO” then select “Control Panel.” (When using ASIO compatible software, you can open the control panel via to open the ASIO control panel of the DAW software. For details, refer to the owner’s manual of the DAW software.)



Macintosh:

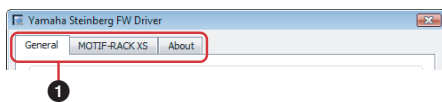
- Select [System Preference...] → [Yamaha Steinberg FW]
- (Mac OS X 10.4/10.5) Select the Application folder → Utility folder → Audio MIDI Setup → Set “Properties” to “Yamaha Steinberg FW”, then click [Configure Device]
- (Mac OS X 10.6) Select Application folder → Utility folder → Audio MIDI Setup → Select “Yamaha Steinberg FW” in the “Audio Devices” window. Click Action menu at the left bottom of the window, then select [Configure device...].
- When using Cubase series Version 4.5 or later, from the Device field on the Device Setup window (called up via [Device] → [Device Setup...]) of Cubase, select “Yamaha Steinberg FW” then click “Control Panel” → click [Open Config App] button in the “CoreAudio Device Settings” window.

NOTE

- The explanations below use Windows as an example, but the basic operation is the same for both Windows and Macintosh.

■ Parameter functions

Overall



1 Tab

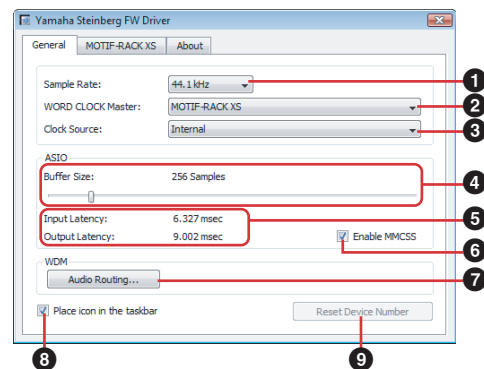
Calls up the corresponding window.

To close the Control Panel window, click the “X” at the top right corner of the window on Windows, or click the “X” at the top left corner of the window on Macintosh.

NOTE

- When two or three devices compatible with Yamaha Steinberg FW Driver are connected in daisy-chain fashion, the corresponding tabs are indicated for each device. When the same two or three devices are connected, the corresponding tabs are indicated with numbers assigned to each device. For details, refer to [page 17](#).

General window



1 Sample Rate

Specifies the sample rate of the device compatible with the Yamaha Steinberg FW Driver from 44.1 kHz, 48 kHz, 88.2 kHz and 96 kHz.

NOTE

- The internal sample rate of the MOTIF XS series instrument and MOTIF-RACK XS tone generator is set to only 44.1 kHz no matter what setting is made here. The setting here affects to the audio signal transmission/reception between the mLAN16E2 and the computer.

2 WORD CLOCK Master

Selects the master device of the Word Clock. This parameter is available only when two or three devices compatible with Yamaha Steinberg FW Driver are connected in daisy-chain fashion.

③ Clock Source

Selects the Word Clock source of the current device compatible with the Yamaha Steinberg FW Driver.

NOTE

- For the n8/n12/mLan16E2, you can select “Internal” only.
For the other devices compatible with the Yamaha Steinberg FW Driver, refer to the owner’s manual of the device.

④ ASIO Buffer Size (Windows only)

Determines the buffer size for the ASIO driver.

⑤ Input Latency/Output Latency (Windows only)

Indicates the delay time for the audio input/output in millisecond units. Audio latency differs depending on the value of the ASIO Buffer Size. The lower the value of the ASIO Buffer Size, the lower the value of Audio Latency.

⑥ Enable MMCSS (Windows Vista/7 only)

Determines whether the MMCSS (Multimedia Class Scheduler Service) is active or not on Windows Vista/7. If you place a checkmark in the checkbox, MMCSS will be enabled and driver performance will be improved.

⑦ Audio Routing (Windows only)

Click this to call up the WDM Audio Routing window. From this window, you can determine the input/output jack used for the WDM Audio driver. In each section, the upper box selects the device (only when two or three devices compatible with Yamaha Steinberg FW Driver are connected in daisy-chain fashion) and the lower box selects the input or output jacks.

NOTE

- This parameter specifies which jacks accept the input signals sent to a computer and to which jacks the output signals from the computer are sent. The input channels are stereo channels. The output channels are six consecutive channels from the stereo channels set in the output port setting.

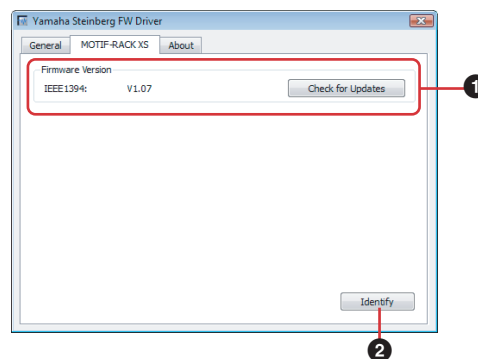
⑧ Place Icon In the taskbar (Windows only)

When this checkmark is entered, the driver icon is indicated on the Taskbar Notification area.

⑨ Reset Device Number

Clicking this resets the indication order of the devices on the DAW software. For details, refer to [page 17](#). This operation is only effective when two or more devices compatible with Yamaha Steinberg FW Driver are connected in daisy-chain fashion.

Compatible Device window



① Firmware Version

Indicates the firmware version of the IEEE1394. Clicking [Check for Updates] will call up the website from which you can download the latest firmware program.

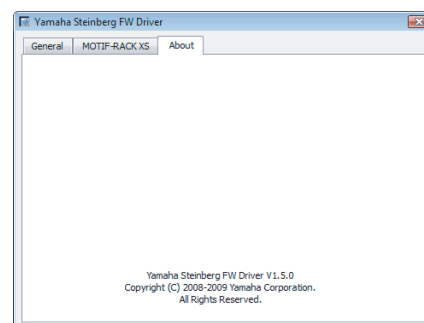
② Identify

Clicking this will cause the response by the currently controlled device compatible with the Yamaha Steinberg FW Driver. The Cubase Ready indicator on the currently controlled n8/n12 will flash. A popup display on the currently controlled MOTIF XS series or MOTIF-RACK XS will appear. This operation lets you confirm which device is actually controlled from a computer when two or more devices are daisy-chain connected.

NOTE

- For other devices compatible with the Yamaha Steinberg FW Driver, refer to the owner’s manual of the device.

About window



This window indicates the version of the Yamaha Steinberg FW Driver.

Word Clock

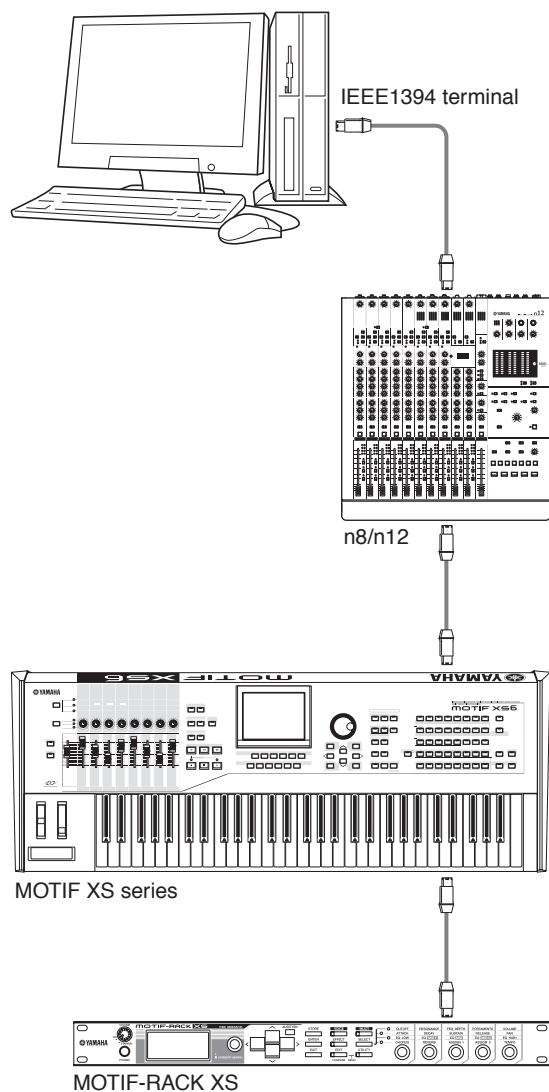
In a typical digital audio system, the signal referred to as “word clock” is used to synchronize the process timing of audio signals between multiple devices. If the word clock is not transferred correctly, click noise may occur or recording may not be successful. Normally, one device transmits a reference word clock signal, and the other devices receive this word clock signal and synchronize to it. The transmitting device is called the “word clock master” and the receiving devices are called “word clock slaves”. Some devices compatible with Yamaha Steinberg FW Driver can function as the word clock slave. Select the word clock source of the word clock signal in the Clock Source parameter.

Setting the audio driver buffer size

Noise produced when using applications such as DAW software can affect audio recording and/or playback. In most cases, you can solve these problems by adjusting the audio buffer size. The buffer size can usually be adjusted via the audio driver setup window in the application. (When using ASIO compatible software for Windows, the buffer size can be adjusted in the ASIO Buffer Size parameter via the Control Panel of the Yamaha Steinberg FW Driver.) While the higher buffer size reduces load to the computer CPU but produces latency (time lag) during recording/playback, the smaller buffer size may result in noise or the sound cutting off. Make sure to set the buffer size to an appropriate value depending on the performance of your computer, the number of audio/MIDI tracks being recorded/played back on the DAW software, the number of plug-in software, and so on.

Using Multiple Devices Compatible with Yamaha Steinberg FW Driver

Up to three devices compatible with Yamaha Steinberg FW Driver can be used simultaneously. By connecting them in daisy-chain fashion to a computer via IEEE1394 cables, you can upgrade your music production system simply by adding other devices.

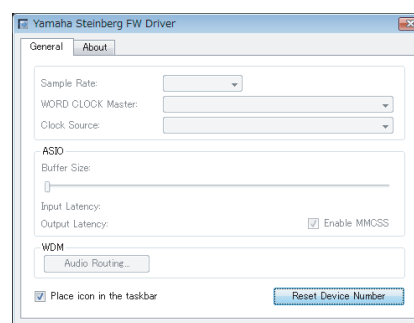


NOTE

- Keep in mind that up to two devices can be connected when the Sample Rate is set to 88.2 kHz or 96 kHz. Even if you connect an additional third device, the last recognized device (other than the device specified as the Word Clock master) connected to the computer will not be available.
- Up to two MOTIF XS series and MOTIF-RACK XS instruments can be connected regardless of the Sample Rate settings.
- Even if multiple IEEE1394 interfaces are installed on the computer, make sure to daisy-chain connect all devices to the jacks of a single interface. This is necessary since the computer can only recognize devices connected to a specific, single IEEE1394 interface jack, and cannot recognize devices connected to different jacks of different IEEE1394 interfaces even though they are installed on the same computer.

When connecting two or three devices compatible with Yamaha Steinberg FW Driver to a computer, the order of devices displayed in the DAW (Cubase etc.) will be maintained even if the power is turned off. The order of devices will be reproduced when turning on the power of the connected devices. When the same two or three devices are connected, a unique number (indicated at the end of the device name) is automatically assigned to each of the devices, in the order with which the devices are connected. The number once assigned to a device will be maintained even if it is disconnected or the power is turned off. If you want to reset the order of devices displayed in DAW or the number assignment, follow the instructions below.

- 1 Turn off the power of all the connected devices compatible with Yamaha Steinberg FW Driver then disconnect all the IEEE1394 cables.
- 2 Call up the Control Panel of the Yamaha Steinberg FW Driver then click the [General] tab.



- 3 Click the [Reset Device Number] button at the bottom right corner of this window.

NOTE

- The [Reset Device Number] button is available only when all the connected devices are turned off. When any device is turned on, this button is dimmed and cannot be clicked.

- 4 Daisy-chain connect two or three devices compatible with Yamaha Steinberg FW Driver to the computer in the desired order.
- 5 Turn on the power of the first device connected directly to the computer.
Wait until the tab corresponding to the first device appears on the Control Panel of the Yamaha Steinberg FW Driver window, indicating that the computer has actually recognized the first device.

- 6 Turn on the power of the second device that is daisy-chain connected to the first device.
The tab corresponding to the second device appears on the Control Panel of the Yamaha Steinberg FW Driver window, indicating that the computer has recognized the second device. If a third device has been connected to this second device, turn the power on in the same manner. As necessary, set the "WORD CLOCK Master" to the desired device.

Hints for Using Audio Data (Windows)

For optimum use of the audio functions, we recommend you make the following settings. These settings minimize possible audio problems, such as drop outs, glitches and noise.

● Set the DMA mode (high-speed transfer mode) of the hard disk to on

Windows 7

Select [Control Panel] → [Hardware and Sound] → [Device Manager] → “IDE ATA/ATAPI controllers,” then double-click “ATA Channel 0” and open [Advanced Settings]. Check (enable) “Enable DMA” in the “Device Properties” section.

Windows Vista

Select [Control Panel] → [Device Manager] (→ [Continue] in the “User Account Control” window) → “IDE ATA/ATAPI controllers,” then double-click “ATA Channel 0” and open [Advanced Settings]. Check (enable) “Enable DMA” in the “Device Properties” section.

Windows XP

Select [Control Panel] → [System] → [Hardware] → [Device Manager] → “IDE ATA/ATAPI controllers,” then double-click “Primary IDE Channel” and “Secondary IDE Channel”, open [Advanced Settings]. Set “Transfer Mode” in the “Device” section to “DMA if available.”

● Set Processor Scheduling to “Background services”

Windows 7

Select [Control Panel] → [System and Security] → [System] → [Advanced system settings] in the upper left of the window → [Advanced] → [Settings] in the Performance section → [Advanced] and select the radio button to the left of “Background services” in the “Processor scheduling” section.

Windows Vista

Select [Control Panel] → [System] → [Advanced system settings] in the upper left of the window (→ [Continue] in the “User Account Control” window) → [Advanced] → [Settings] in the “Performance” section → [Advanced] and select the radio button to the left of “Background services” in the “Processor scheduling” section.

Windows XP

Select [Control Panel] → [System] → [Advanced] → [Settings] in the “Performance” section → [Advanced] and select the radio button to the left of “Background services” in the “Processor scheduling” section.

● Set the Visual Effects options to “best performance”

Windows 7

Select [Control Panel] → [System and Security] → [System] → [Advanced system settings] in the upper left of the window → [Advanced] → [Settings] in the “Performance” section → [Visual Effects] and select the radio button to the left of “Adjust for best performance.”

Windows Vista

Select [Control Panel] → [System] → [Advanced system settings] in the upper left of the window (→ [Continue] in the “User Account Control” window) → [Advanced] → [Settings] in the

“Performance” section → [Visual Effects] and select the radio button to the left of “Adjust for best performance.”

Windows XP

Select [Control Panel] → [System] → [Advanced] → [Settings] in the “Performance” section → [Visual Effects] and select the radio button to the left of “Adjust for best performance.”

● Set Remote Assistance to off

Windows 7

Select [Control Panel] → [System and Security] → [System] → [Remote settings] in the upper left of the window → [Remote] and uncheck “Allow Remote Assistance connections....”

Windows Vista

Select [Control Panel] → [System] → [Remote settings] in the upper left of the window (→ [Continue] in the “User Account Control” window) → [Remote] and uncheck “Allow Remote Assistance connections....”

Windows XP

Select [Control Panel] → [System] → [Remote] and uncheck “Allow Remote Assistance invitations....”

● Enable the Classic Start menu

Windows Vista/XP

Right-click on an empty space on the task bar and select [Properties] → [Start Menu], then select the radio button to the left of “Classic Start menu.”

● Disable transition effects

Windows 7

Select [Control Panel] → [Ease of Access] → [Ease of Access Center] → “Make it easier to focus on tasks,” then check (enable) “Turn off all unnecessary animations (when possible)” in the “Adjust time limits and flashing visuals” section.

Windows Vista

Select [Control Panel] → [Ease of Access Center] → “Make it easier to focus on tasks,” then check (enable) “Turn off all unnecessary animations (when possible)” in the “Adjust time limits and flashing visuals” section.

Windows XP

Select [Control Panel] → [Display] → [Appearance] → [Effects...], and un-check (disable) “Use the following transition effect for menus and tooltips.”

● Disable SpeedStep™

Refer to “Troubleshooting.”

● Disconnect your computer from the Internet

Select [Control Panel] → [Network and Sharing Center]/[Manage network connections] and right-click “Disable.”

Troubleshooting

■ If an error message appears:

- Refer to the Error Message List on [page 21](#).

■ No sound is heard, or the sound is too faint.

Settings on the device compatible with Yamaha Steinberg FW Driver and connections

- The connection cable from the external device may be broken.
- Make sure that the speakers or headphones are connected correctly.
- Make sure that the power to your amplifier and other external devices is turned on.
- Make sure that the volume between monitor speakers is well-balanced.
- Is the Word Clock setting correct for both the device compatible with the Yamaha Steinberg FW Driver and the external device(s)?

Settings on a computer

- Make sure to set the volume settings within your application to appropriate levels.
- Confirm whether or not the settings in the Yamaha Steinberg FW Driver are appropriate. For details, refer to “[Audio and MIDI signals fail to transfer between computer and the devices compatible with the Yamaha Steinberg FW Driver.](#)”

■ The sound is distorted.

Settings on the devices compatible with the Yamaha Steinberg FW Driver and connections

- The connection cable from the external device may be broken.
- Make sure that audio was recorded at an appropriate level.
- The EQ gain may be set excessively high. Set this control to an appropriate level.
- Confirm whether or not the Word Clock settings for both the devices compatible with the Yamaha Steinberg FW Driver and the external device(s) are correct.

Settings on a computer

- Make sure that audio was recorded at an appropriate level.

■ Noise is generated.

Settings on the devices compatible with the Yamaha Steinberg FW Driver and connections

- There may be a noise-inducing device (such as a device containing a power inverter, etc.) near the cables. Move all cables away from any possible sources of noise.
- Confirm whether or not the Word Clock settings on the devices compatible with the Yamaha Steinberg FW Driver and the connected devices are correct.

Connection with a computer

- The IEEE1394 cable may be damaged. Cables that do not satisfy IEEE1394 (S400) standards may cause noise.
- There may be a noise-inducing device (such as a device containing a power inverter, etc.) near the IEEE1394 cables. Move all cables away from any possible sources of noise.
- Make sure that the appropriate number of devices is connected to the computer. Connection of too many devices may cause noise, depending on the capacity of the computer.

Settings on a computer

- Make sure that your computer satisfies the system requirements.
- Make sure that the latency setting of the Yamaha Steinberg FW Driver is appropriate.
- Make sure that the sample rate is appropriate. A high sample rate may be the cause of noise, depending on the computer's capacity and speed.

- If your computer's hard disk is slow, problems may occur during recording and playback.
- Try increasing the computer's memory capacity.
- Quit all applications that are running in the background when you use the devices compatible with the Yamaha Steinberg FW Driver (Yamaha Steinberg FW Driver) with the computer. If such software is running, driver operation may become unstable and create noise. If you do not plan to use the Yamaha Steinberg FW Driver, you can turn these applications on again.
- (For Windows) Mobile computers with Intel EIST™ (CPU SpeedStep™) technology is applied for some CPU's (for notebook PC). If you are using the devices compatible with the Yamaha Steinberg FW Driver (Yamaha Steinberg FW Driver) along with such a computer, disable the EIST™ (CPUSpeedStep™) technology function. Most computers allow you to disable/enable this in the BIOS. Please refer to the PC's operating manual, or consult the PC manufacturer.
- (For Windows) Some network adaptors can cause noise. In such a case, use the Device Manager to disable the suspected network adaptor to remove the noise.

■ The computer processing speed is too slow.

■ The computer's CPU meter indicates a heavy processing load.

■ Playback response is delayed.

■ Insufficient tracks for recording or playback.

Connection with a computer

- Make sure that the appropriate number of devices is connected to the computer. Try reducing the number of devices connected to the computer.

Settings on a computer

- Make sure that your computer satisfies the system requirements.
- Try increasing the latency value of the Yamaha Steinberg FW Driver.
- (For Windows) Refer to “Hints for Using Audio Data (Windows)” on [page 18](#).

■ Incorrect pitch.

Settings on the devices compatible with the Yamaha Steinberg FW Driver and connections

- Confirm whether or not the master device of the word clock works in a stable way.
- Make sure to set the Sample Rate of the devices compatible with the Yamaha Steinberg FW Driver to the same value as that of the synchronized external audio device.

■ The device name cannot be recognized from the DAW software.

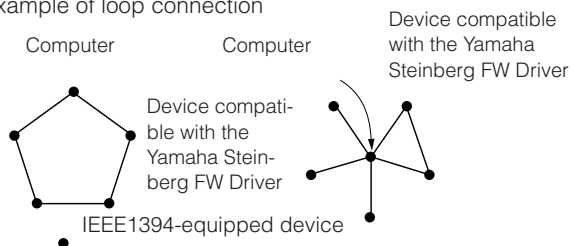
■ Audio and MIDI signals fail to transfer between computer and the devices compatible with the Yamaha Steinberg FW Driver.

Connection with a computer

- Make sure that the IEEE1394 cable is connected properly, and that the power to the devices compatible with the Yamaha Steinberg FW Driver has been turned on. Disconnect the IEEE1394 cable once, then insert it again.

- There may be a loop connection. Check the cabling to make sure that none of the devices are connected in a loop.

Example of loop connection



- Confirm whether or not four or more devices compatible with the Yamaha Steinberg FW Driver are connected. Up to three devices compatible with the Yamaha Steinberg FW Driver can be used simultaneously when the Sample Rate is set to 44.1 kHz/48 kHz. Up to two devices can be connected when the Sample Rate is set to 88.2 kHz or 96 kHz. In this case, make sure to turn the power of the unused devices to off, or disconnect the IEEE1394 cable from the computer.
- Confirm whether or not other IEEE1394 devices are connected to the computer. The limit of the IEEE1394 BUS bandwidth may have been exceeded. Make sure to turn the power of the unused devices to off, or disconnect the IEEE1394 cable from the computer.
- If any IEEE1394 devices which are not compatible with Yamaha Steinberg FW Driver are connected directly to a computer, disconnect them from the computer and make sure to connect only a device which is compatible with the Yamaha Steinberg FW Driver.
- There may be multiple IEEE1394 interfaces installed on the computer and each of the multiple IEEE1394 devices may be connected to different interfaces. When using multiple devices compatible with the Yamaha Steinberg FW Driver and connecting them to the computer peer-to-peer individually (i.e., star-connection), make sure to connect them all to the jacks of a single interface.

Settings on a computer

- Confirm whether or not “Yamaha Steinberg FW Driver” has been installed correctly.
- (For Windows XP) “Add New Hardware Wizard” may not be completed correctly. If you have canceled it, restart the computer so that “Add New Hardware Wizard” appears.
- Restart the computer.
- (Macintosh) If the new IEEE1394 interface (PC card, etc.) is connected to the computer (with the power turned on), restart the computer. The IEEE1394 device compatible with the Yamaha Steinberg FW Driver will be recognized by the computer after restarting.
- (Windows) Confirm whether or not “AI Driver (n Driver)” or “mLAN Driver/mLAN Tools” has been installed in the computer. Turn the driver to disable (off).

■ Unable to transfer MIDI data or Program Changes.

(When using a device which is compatible with the Yamaha Steinberg FW Driver and features MIDI ports)

Settings on the device, external device and computer

- Confirm whether or not the appropriate MIDI port is selected in the application software (DAW, etc.).
- Make sure the transmission and receive channels match between both the source device and destination device including the DAW software.
- Confirm whether or not the MIDI settings have been properly made in the connected devices including the DAW.
- Confirm whether the power of all connected devices has been turned on or not.

■ Cannot use other connected IEEE1394 devices correctly.

- Disconnect the IEEE1394 device compatible with the Yamaha Steinberg FW Driver from the computer.

NOTE

- For details of the issues, also refer to the “Troubleshooting” section in the owner’s manual of the device compatible with the Yamaha Steinberg FW Driver.

Appendix

Error Messages

Error message	Cause	Solution
Failed to initialize.	Initialization of Yamaha Steinberg FW Driver has failed.	Restart the computer.
(Software name) (Version) is installed. Yamaha Steinberg FW Driver cannot work with this version. Please update it to V1.6.3 or later.	(Windows only) The version of n Driver, AI Driver and mLAN Driver/mLAN Tools installed to your computer may not be compatible with the Yamaha Steinberg FW Driver.	Uninstall AI Driver (n Driver). Update mLAN Driver/mLAN Tools installed to your computer to V1.6.3 or later.
Failed to open Control Panel.	The Yamaha Steinberg FW Driver does not work properly.	Try the following operations. · Restart the computer. · Uninstall then install Yamaha Steinberg FW Driver
Failed to change driver setting due to another processing.	The settings on the Control Panel cannot be accepted because another program is now changing the settings of the Yamaha Steinberg FW Driver.	Perform the settings again after a while.
Failed to change driver setting.	Failed due to a cause other than the above.	· Disconnect the IEEE1394 cable from the device compatible with the Yamaha Steinberg FW Driver then connect again or turn off the power to that device then turn on the power again. · Restart the computer.
	Insufficient memory space.	Exit all unnecessary applications and uninstall the unnecessary drivers.

Uninstalling AI Driver (n Driver) or mLAN Driver/mLAN Tools

■ Windows

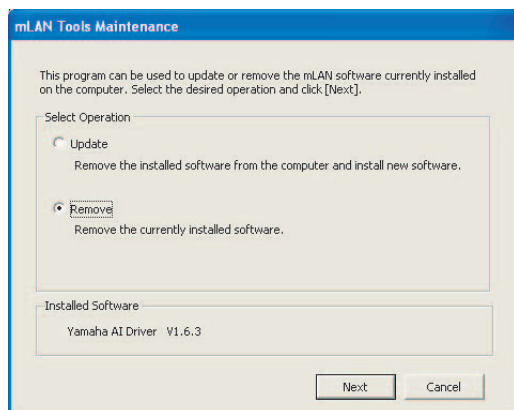
To uninstall AI Driver (n Driver) or mLAN Driver/mLAN Tools, you must remove the following two software components:

- AI Driver (n Driver) or mLAN Applications for Yamaha
- mLAN Tools 2.0

Installed software can be removed from your computer as follows.

- 1 After the downloaded compressed file is properly extracted, double-click the “setup.exe” file in the “Uninstall_mLAN” folder.**

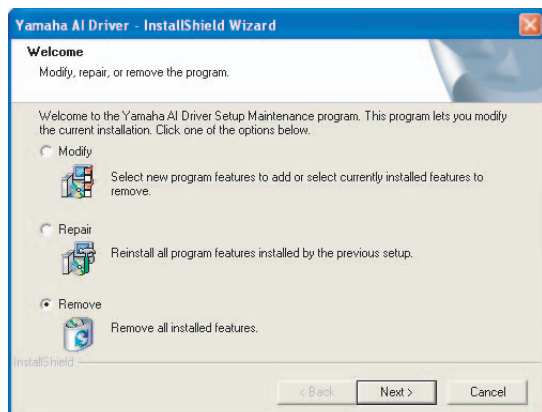
The maintenance window appears.



NOTE

- When using Windows Vista, click [Continue] if the “User Account Control” window appeared. After that, the maintenance window will appear.
- If AI Driver (n Driver) or mLAN Driver/mLAN Tools has not been installed, A message “Installer cannot be found” appears. Installer starts.

- 2 Select the radio button to the left of “Remove”, then click [Next].**
- 3 A message “Remove (A name of software installed)” appears. Click [Next].**
- 4 “Welcome” window appears. Check the radio button to the left of “Remove”, then click [Next].**



- 5 Confirmation regarding removal of the file appears. Click [OK].**

The maintenance operation starts.

- 6 You are informed when the maintenance operation is complete. Click [Finish].**

- 7 The message “Remove mLAN Tools 2.0” appears. Click [Next].**

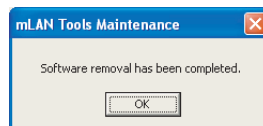
- 8 Confirmation regarding removal of the file appears. Click [OK].**

The maintenance operation starts.

- 9 You are informed when the maintenance operation is complete. Click [Finish].**

- 10 A dialog box indicating that “The software has been removed” appears. Click [OK].**

The uninstallation of AI Driver (n Driver) or mLAN Driver/mLAN Tools is complete.



NOTE

- You can also uninstall the software by using “Add or Remove Programs” / “Programs and Features” in the Windows Control Panel.
Remove the following two software programs in the listed order. (Be sure to remove software 1, then software 2.)
 - 1) Yamaha AI Driver (Yamaha n Driver) or mLANApplications for Yamaha
 - 2) mLAN Tools 2.0

■ Macintosh

To uninstall AI Driver or mLAN Driver/mLAN Tools, you must remove the following folders and files from the boot disk (usually Macintosh HD). Depending on the installed software, some of these folders/files may not exist on your computer.

```
/Applications/mLAN Tools/  
/System/Library/Extensions/Yamaha1394AudioDriver.kext  
/System/Library/Extensions/YamahaOGTAsync.kext  
/System/Library/Frameworks/mLANEnablerFramework.framework  
/System/Library/Frameworks/mLANQt.framework or mLANQtFramework.framework  
/Library/Application Support/mLAN/  
/Library/Audio/MIDI Drivers/Yamaha1394MIDI.plugin  
/Library/Preferences/com.yamaha.mLAN Manager.plist  
/Library/Receipts/01XHAL.pkg  
/Library/Receipts/1394AudioDriver.pkg  
/Library/Receipts/1394MIDIPlugIn.pkg  
/Library/Receipts/i88XHAL.pkg  
/Library/Receipts/NCP08HAL.pkg  
/Library/Receipts/mLAN16EHAL.pkg  
/Library/Receipts/mLANAsyncLibrary.pkg  
/Library/Receipts/mLANAutoConnector.pkg  
/Library/Receipts/mLANEnablerFramework.pkg  
/Library/Receipts/mLANGraphicPatchbay.pkg  
/Library/Receipts/mLANManager.pkg  
/Library/Receipts/mLANQt.pkg  
/Library/Receipts/MY16mLANHAL.pkg  
/Library/Receipts/Presets.pkg  
/Library/Receipts/YamahaAIDriverHAL.pkg  
/User/ (Account name) /mLAN/  
/ User/ (Account name) /Library/Preferences/com.yamaha.autoconnector.plist  
/ User/ (Account name) /Library/Preferences/com.yamaha.mLAN.GraphicPatchbay.plist  
/ User/ (Account name) /Library/Preferences/com.yamaha.mLAN Manager.plist
```

NOTE

- “(Account name)” indicates the account name when AI Driver is installed.